

WEATHER

	Min.	Max.	Precip.
Wednesday, July 2	60	86	0.00
Thursday, July 3	65	88	0.00
Friday, July 4	67	88	0.00
Saturday, July 5	59	87	0.00
Sunday, July 6	62	85	1.12
Monday, July 7	66	83	0.00
Tuesday, July 8	67	83	0.25

ONE HUNDRED-SIXTH YEAR—No. 4

12 Pages This Week

Plus 4-Page Supplement

CHELSEA, MICHIGAN, THURSDAY, JULY 10, 1975

15c per copy

SUBSCRIPTION: \$6.00 PER YEAR

Fair Time Drawing Near

Do you realize there are only 46 days left 'til fair time? Many new things will happen this year and of course many of the old favorite activities will be back. This year, for the first time Chelsea Community Fair will have a Premium Book listing all exhibits and prizes, activities, and much more information. The book will be ready for distribution soon and fair chairmen suggest planning your exhibits now.

The very popular Demolition Derby will be held on Thursday again this year. Registration forms are now available from Frisinger Realty, Wolverine Bar, Earl Heller or Ruth Leach at 475-7329.

New bleachers have been ordered by the Fair Board to accommodate 520 more people in the grandstands.

New fencing is to be installed around the Fair Property as approved by the Village Council at a hearing on June 3. The Fair Board recently purchased an additional 10 acres, making a total of 23 now available for Community Activities. This addition will help relieve some of the parking problems of previous years.

Some of the new activities scheduled for this year are:

- Tricycle Pull for children on Tuesday.
- 4-Wheel Drive Pick-up Pulling Contest on Wednesday.
- Horse Shoe Pitching Contest on Friday.
- Pony Pulling Contest on Saturday Evening.
- Baby Animal Display.

Mark your calendars! Fair Week is Aug. 26, 27, 28, 29 and 30.

Westland Youth Drowns at Half Moon

A Fourth of July outing to the Pinckney Recreation area was spoiled for the Decker family of Westland, when a member of the family drowned while playing off an inner tube on Half Moon Lake, north of here.

According to Washtenaw County Sheriff's reports, the child, Andrew M. Decker, was noticed missing by his mother about 7:30 p.m. Friday. Police searched both water and land, finally recovering the child's body Saturday afternoon just outside the public swimming area about 120 feet offshore. Police later learned the boy could not swim.

This marks Washtenaw county's 11th drowning this year. There were five drownings in 1974.

ELP Children Devour 25 Watermelons

Twenty-five entire watermelons were consumed by children in the Earn, Learn and Play program last Thursday, when they climaxed their second week of this year's program with Watermelon Day.

Days began as usual for the group with the Earn hour. This week, clean-up was done on the ball fields and parks.

Game sports learned were soccer, huckball, softball, and gym games. Arts and Crafts also provided some new and interesting projects: corks were painted, construction paper houses were built and copper tooling was learned. Michelle Ziegler taught a special class in macramé.

In free play, games of competition, both inside and outside, were available and free swims at Half Moon Lake were enjoyed all week long.

The children are currently working on a play, "The Mouse That Soared." The production is slated to be presented next week.

Math and reading tutoring sessions began Tuesday and continued on Thursday.

This Friday (tomorrow), a special day is scheduled, Main Street USA. Children will meet at 9 a.m. at the high school where buses will be boarded to transport everyone to the village parking lot.

Work crews composed of busy ELP children will begin their annual clean-up of the Main St. business area. Afterward, the buses will transport everyone to Half Moon Lake for a day of sunning and swimming. Hot dogs, potato chips, pretzels, soda pop and candy will provide a picnic fare lunch.

Following the afternoon picnic, the buses will reload and return the happy children to the high school at 3 p.m.

CHS Class of '15 Meeting Sunday For 60th Reunion

Chelsea High School class of 1915 will hold their 60th reunion this Sunday, July 13, with a 1 p.m. catered dinner at 668 Washington St., the Lionel Vickers home.

Twenty-six men and women graduated from CHS 60 years ago; 12 of those class members have indicated plans to be present to exchange memories this Sunday. Only two of the surviving class members have reported they will be unable to attend.



SEVEN FEET HIGH BY THE FOURTH: That's is pictured here by a crop of field corn on his 130-acre farm judged to be near seven feet high. true for Don J. Herrst of 300 S. Dancer Rd. Herrst is 5'8" ... so judge for yourself.

'Oklahoma' Production Opens July 31 With Chelsea Players

"Oklahoma!" one of the most popular, longest running, most widely produced musical shows in theatrical history; the show which first brought together that famous team of Richard Rodgers and Oscar Hammerstein is currently in rehearsal and will be produced on the Chelsea High school stage beginning Thursday, July 31. There will be three performances.

Based upon a straight play by Lynn Riggs called "Green Grow the Lilacs," which was an affectionate memory of the author's childhood near Claremore in what was then still called the Indian Territory before it was admitted to statehood, "Oklahoma!" ran for five years and two months during its first New York engagement, to establish an all-time long run record for that time.

As Brooks Atkinson, drama critic for the New York Times said in his review of the Lincoln Center revival of "Oklahoma!" all the celebrated songs written by Rodgers and Hammerstein for this show "have now become classic, not merely because they have been sung so often. They are classics because they are romantically and gloriously tuneful."

Chelsea Players' production features

Dennis, Bauer and Laurie Lancaster as Curly and Laurey, the romantic leads. Jodi Daniels and Howard Salyer will fill the comedy roles of Ado Annie, "the girl who can't say no," and Will Parker, the cowboy who reports on Kansas City. Bill Coelius will play Ali Hakim, the wily Persian Peddler and Jeff Daniels will play Jud, the menacing hired hand. Others in the large cast include Jan Koegeter as Aunt Eller and Neil Cockerline as Andrew Carnes.

Dennis Stofor as Cord Elam, and Jim Stirling as Ike Skidmore. The production is under the direction of DiAnn L'Roy and choreography is by Joan Yocum.

All seats for the three performances are reserved. Tickets may be purchased through the Pump & Pantry or by mail. Persons desiring seats for a particular performance may mail a self-addressed stamped envelope with \$3 per ticket to Chelsea Players, P. O. Box 82, Chelsea.

Vacation Church School Sessions Start July 28

First United Methodist church will be holding a Vacation church school Monday through Thursday, July 28-31 and Monday through Thursday, Aug. 4-7.

Children from 2-3 years of age through the 6th grade are eligible to attend the two week 9-11 a.m. Vacation Church school. And young people from any church may attend.

One of the highlights will be for the 5th and 6th graders who will take day camp excursions.

On the final day of the program, Thursday, Aug. 7 at 6:30 p.m., Vacation Church school students will join their families for a family pot-luck supper followed by a program put-on by the students.

A slight fee covering the cost of materials will be charged. Registration for the Vacation Church school may be made through the First United Methodist church.

Byron Pearson Joins Baltimore Symphony

Playing a six-week stint with the Baltimore Symphony in Baltimore, Md., this summer is Byron Pearson, Pearson, the son of Mr. and Mrs. Willard Pearson of 1940 Old US-12 East plays trumpet with the symphony.

Following his summer in Maryland, he will return to the University of Michigan to complete his studies toward a masters degree in music.

Pearson has been a member of the President's own band, the Marine Band, and played for seven years with the New Orleans Symphony.

Mrs. Willard Pearson is recuperating at the Chelsea Community Hospital following a mild heart attack she suffered two weeks ago. Mrs. Pearson is in room 43.

Council Okays Curb, Sidewalk On Freer Rd.

Village Council held a special assessment hearing Monday evening concerning the construction of a curb, gutter and sidewalk on portions of Freer Rd. and Washington St.

Following a lengthy discussion which many residents expressed their opinions on the proposed construction, the council passed a resolution determining the public necessity for such improvements and that portions of the cost incurred in the construction would be paid by property owners benefiting from the improvements. The assessor was instructed to

prepare a special assessment role for property owners in the area, pro-rating the cost according to frontage.

Cost for the project is estimated at \$6.75 a foot for the construction of the curb and gutter and \$3.08 a foot for the construction of the sidewalk.

Once the special assessment role has been prepared, there will be a public hearing held so that residents in the area may voice their feelings. According to administrator Frederick Weber, this meeting is expected to be held sometime in August.

Babe Ruth Travelers Win U-P Tournament

The Chelsea Babe Ruth Travel Team traveled to the Upper Peninsula of Michigan over the fourth of July Holiday week-end to pit their talent against one of the strongest powers in the U-P, Escanaba. The outcome was one to be proud of as Chelsea won the tournament, winning two of three games.

In the first of the three-game tournament, Chelsea played Escanaba's first place team. A 5-8 victory resulted for the Chelseaites. Jeff Powell pitched a fine one-hitter while striking out 12 and walking five. Joe Ewald went three for four, while Steve Check went two for two. Dave Dawson had a double.

In the second game Chelsea errored to even the series, 1-1. In this game against Gladstone, pitcher Kurt Owings discovered that his team seemed to have forgotten their gloves. Steve Check

hit a triple, while Owings went three for three. Dave Schrotenboer hit a double and the final score was 9-6.

In the third and final game, the Chelsea team was pitted against the power team in the U-P, a team expected to go far in state ranking this year. Kurt Owings took the mound duties and struck out six while walking one batter. Dave Schrotenboer and Greg Reed each smashed a home run out of the park, traveling 365 feet. Final score, 6-4, and a tournament victory for Chelsea.

The Chelsea Travel Team will begin state tournament play this Saturday on the Eastern Michigan University ball field at 12 p.m. against Ypsilanti. Chelsea will once again find itself in competition with some top seeded teams; this time in the lower peninsula. The team's record now stands at 10-1 for the season.

3-D Sales Upsets Jiffy Mixes in Fast Pitch Play

The Fast-Pitch League was off to an exciting start last week as Monday evening's play featured a near upset of Jiffy Mixes and the actual upset of Bennett Installation.

In the first game Monday, Jiffy was almost defeated by the fine pitching of Dennis Engel of Thompson's Pizza, but in what appears to have become a trademark for Jiffy, they fought back to gain the lead in the sixth inning, holding off the Thompson team. The game left Jiffy in first place, a half game ahead of 3-D Sales by virtue of having played and won one more game than the 3-D team.

In the second game Monday, Bennett Installation was upset by the strong hitting of the Chelsea Milling team. In what should have been an easy game for Bennett, Chelsea Milling surprised them by knocking out the starting pitcher and then doing the same to their pitching ace, Tom O'Haver.

Also in Monday night's play, Ann Arbor Centerless began its climb to contention by defeating a tough Stivers team in a make-up game. Stivers took an early lead, but Ann Arbor Centerless came back with a very strong hitting attack to win, 8-4.

The rest of the week ran close to form as Bennett defeated Zion Lutheran in a make-up game played Tuesday. Ann Arbor Centerless

defeated Zion on Wednesday and 3-D Sales ended the holiday week by defeating Stivers.

The Fast-Pitch league is having a Double Elimination Tournament here on July 19-20 as a tune-up for the State Class D Tournament to be held on the following two week-ends. All of the Chelsea teams will play in the D District Tournament this year. Most of the tournament will take place in Ann Arbor.

In Monday night's play this week, Jiffy Mixes, top of the Fast-Pitch league, toppled to 3-D Sales in a nine-inning game. 3-D, who now stands first in the Fast-Pitch league of men's recreation softball, took their victory over Jiffy Mixes, 4-3. Pitching for 3-D and going all the way was Bill Pidd.

(Continued on page five)

CHS Class of '65 Reunion Slated Saturday Evening

Chelsea High School Class of 1965 reunion will be held Saturday, July 12 at the Rod and Gun Club. A cocktail hour will begin at 5 p.m., followed by dinner at 7 p.m. and dancing at 9 p.m. to the music of Jim Gaken's band.

Charge for the evening will be \$10 per person.

Sidewalk Festival Entries Due July 26

Chelsea's Sidewalk Festival, is less than one month away, and judging from the entries, there are some exciting things in store for lookers and buyers.

According to Karen Johnson, who has been taking entries for the Aug. 8 and 9 event, 39 spaces have been reserved. Such things as Indian jewelry, (and Karen exclaims just how beautiful it is) woodcarving, water color prints, ceramics, silk-screening, hand-painted jewelry, hand-made toys, ceramics and much more will be featured along Chelsea's sidewalks.

This is the third year that the Chelsea merchants have expanded their annual sidewalk sales to include the outdoor art fair.

Persons interested in displaying their works must register for a booth before July 26. The entry fee is \$10 for the 10-foot space. An exhibitor must provide his own table and easels to display his or her work. The fee may be made payable to Karen Johnson, 118 S. Main St. Persons desiring further information, may contact Karen at Karen's Boutique or Eve Policht at the Chelsea Card & Gift Shop.

John Bauer Nipped in Firecracker 5-Mile Race

John Bauer's intentions to win the Firecracker Five-Mile Race in Grass Lake were not met last Friday, July 4, but Bauer's good nature didn't prevent him from enjoying the event and saying with a smile, "I did well. I ran a minute faster than last year. I got a t-shirt instead of a trophy, and frankly, I needed the t-shirt more."

Bauer ran in the men's 35 and older division, pitting himself against some younger and admittedly faster runners. Last year, Bauer won the men's 40 and over division, but according to him, "they lowered the age ... to give me some competition."

Bauer's time of 30 minutes and

46 seconds couldn't beat that of Dave Peales of Ann Arbor, but Bauer did place second.

Other Chelsea participants were Jim Storey, a 1974 Chelsea High school grad who ran in the 18 and over division. Bauer said Storey's 29:25 was really good. "He ran in a class with 50 people and some of them top college runners."

Another runner was Rick Haller, running in the 17 and under division. Haller ran in a time of 30:47. "He beat me by one second," Bauer chuckled.

Does he intend to run next year? "Yeah, I enjoy it, and that's what counts."

Approximately 76 men and women ran in the Grass Lake event.

Antique Shop Will Open

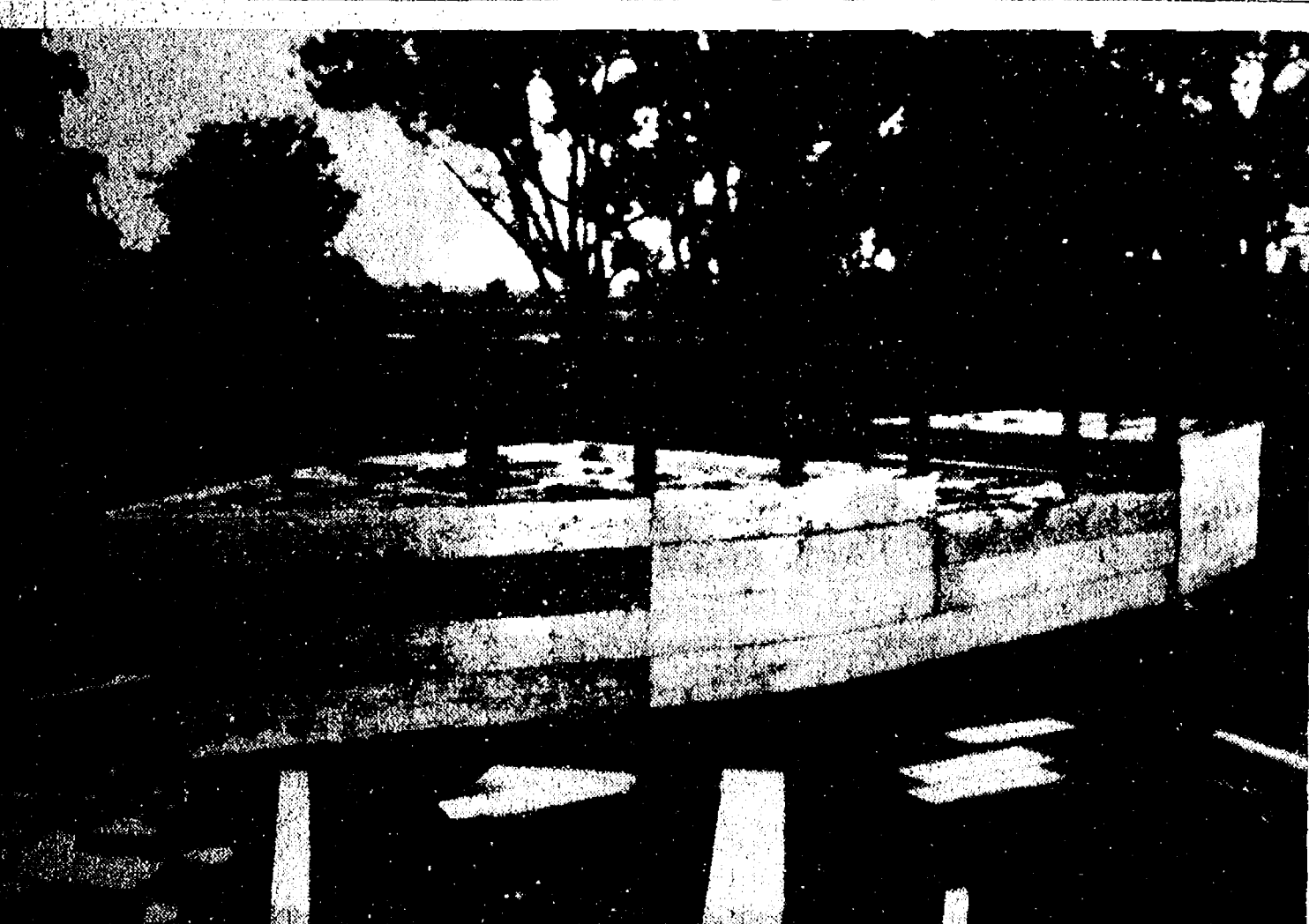
Karen's Boutique located at 118 Main St., will soon have an upstairs address also, to be known as Karen's Antiques, 118 1/2 S. Main St.

Opening Friday, July 11, Karen's Antiques, an idea to provide good old antique furniture and bric-a-brac at affordable prices, has become a family affair.

The entire family has been collecting for the shop "from all over" articles such as glassware,

tiffany lamps, jewelry, picture frames, stained glass, lots and lots of furniture and even a beautiful old waffle iron. And Karen's son, Jeff, who has learned the art of caning from his grandfather, and refinishes furniture too and will be on hand to advise both buyers and lookers.

The shop will be open daily from 9:30 to 5:30 and later on Fridays.



WHAT IS IT? Everyone seemed to be asking the question early this week as they drove the weird looking pile of lumber in Veterans Park. What it is, according to Recreation Council member Tom Ballatore, is a ship's model for

kids to climb on. In addition to the raised deck, there will be a mast and crow's nest for amusement of the younger set. Enough for now—watch it develop in the next few days.

Police Ticket Cyclist on Three Charges

Stephan Lloyd Grob was apprehended by Village Police Officer Gerald Ringe Sunday at his 13214 Old US-12 address following a chase he gave Ringe when the officer tried to stop him on his motorcycle for driving with open intoxicants in his possession.

According to police reports, Ringe was on routine patrol when he observed the young man driving his cycle, beer in hand. Ringe was familiar with Grob, having issued him two tickets the previous Sunday for speeding and driving without an operator's license.

Officer Ringe attempted to stop Grob at the intersection of Main and Old US-12 when the chase ensued. Ringe finally stopped Grob in a field. He issued the young man three tickets on three counts; open intoxicants, reckless driving and a third charge, driving without an operator's license which is still pending. Grob pled guilty to the first two charges Tuesday in 14th District Court.

In discussing the case, Police Chief Meranuck said that because of the numerous complaints received regarding the operation of motorcycles, police are enforcing strict rules and regulations with regard to operation of the two-wheeled vehicles.



THIS APARTMENT BUILDING constructed by sits on the old Junior High site facing Harrison Weber Homes' seems to have gone up overnight. ... at least in only a few days last week. It

Established 1871 **The Chelsea Standard** Telephone 475-1371
 Excellence Award By Michigan Press Association
 1951-1952-1960-1964-1965-1968
 Walter P. Leonard, Editor and Publisher



Published every Thursday morning at 300 North Main Street, Chelsea, Mich. 48118, and second class postage paid at Chelsea, Mich., under the Act of March 3, 1879.

Subscription Rates (Payable in Advance)

In Michigan:	Outside Michigan:
One Year\$6.00	One Year\$8.50
Six Months\$3.50	Six Months\$4.50
Single Copies\$.20	Single Copies\$.25

MEMBER
NATIONAL NEWSPAPER
 Association - Founded 1888

National Advertising Representative:
 MICHIGAN NEWSPAPERS, INC.
 257 Michigan Ave.
 East Lansing, Mich. 48823

Uncle Lew from Lima Says:

DEAR MISTER EDITOR:

Ed Doolittle came to the meeting at the country store Saturday night with this report where the FBI says crime is higher among folks out of work than with them that has a job, and that crime in the country is running even with crime in the city. Ed said that bit of detective work is about as surprising as President Wilson's discovery that "as more and more people are put out of work, unemployment results."

You can believe liars figger, but figgers don't lie. Ed allowed, but you can take a set of Government findings and go any way you want to with em. Fer instant,

Ed said the FBI report didn't say nothing at all about the Senate's report that the FBI and the CIA probable are pulling off more crimes against the people than the people are against themselves, not to mention the CIA's habit of planning killings and overthrows in other countries. Ed said he took the FBI report to deal with civilian crime, not that of the Government's top internal and external police outfits.

What the report means, Ed said, is that even in this modern day idle hands still is the Devil's workshop. People that can't find nothing better to do will wind up doing somethin' they got no business, was Ed's words. As fer the country-city crime rates, all that means is that there is no more difference in rural-urban crime than there is in the way folks talk, dress, the houses they live in, the food they eat and the TV they watch. The more the country is different, the more it's alike, Ed said. The boy in the big city slum and the one that gits into town off the ranch one night a week is watching the same evening news, Ed said, and unless they're gitting a heap of help at home, their minds is being shaped by the same things. It don't take no \$30 a hour social psychologist to figger out why they wind up smoking the same dope and robbing the same stores.

Zeke Grubb had another report where the U.S. Department of Agriculture says it costs as much to live on the farm as it does in town. This went over with the same kind of shock that Ed's FBI findings did. Zeke said living expenses for a farm family averaged \$10,786 in 1973, a whopping jump from the \$3,308 it cost in 1955. The USDA didn't have income figgers for 1955, Zeke said, but he said he would guess that the pattern pritty much holds true that wherever you live today you're finding that you have a lot of year left over at the end of your money.

General speaking, Mister Editor, folks that move from the city to best of both worlds. They got the idee of living cheap, but still having their garbage picked up twice a week. They're looking for steak at balloney prices, and you don't find them bargains these days. I see where a U.S. Mint inspector said our money was meeting all the "physical requirements," but he meant the money, not fer the folks that spend it.

Yours truly,
 Uncle Lew.

The veteran population includes 13.59 million veterans of World War II, 7.5 million of the Vietnam era, 5.9 million of the Korean Conflict, 989,000 from World War I and 900 if the Spanish-American War.

MICHIGAN MIRROR

By Elmer E. White, Secretary, Michigan Press Association

Topic Is Teeth

One dentist for every 2,133 folks. That's what Michigan offers residents who want to make sure their teeth are in top shape.

The figures, included in a State Board of Education report on dental education in Michigan, indicate the state's average is higher than the national ratio. That means there are more people per dentist here than there are generally on the national level.

But the Board notes that Michigan's ratio is comparable to other states in this part of the country, and it's much better than figures reported for Michigan 20 years ago.

What's in store in future years? The Board projects an improvement in the ratio. And it emphatically recommends a plan that would apparently greatly expand productivity of the state's dentists.

"According to recent information from the annual 'Survey of Dental Practice,' it is possible for a dentist to increase his output from 20 to 40 percent by the effective use of auxiliaries," the Board report says.

Thus, the report suggests, dentists' helpers—hygienists, assistants and technicians—should be trained to do more around the office. Such a training plan could help resolve most of the problems anticipated in serving the dental needs of Michigan citizens, the report declares.

Pay the Piper

The thief who sneaks into someone's home and makes away with a sack full of valuables may find himself paying the victim for his troubles.

That's the proposal put forth in Lansing by Rep. Dennis Hertel, D-Detroit.

"Under our usual process there is no justice for the crime victim," who often suffers a great financial loss as a result of the criminal act," Hertel says. While the victims are forced to work and scrimp to put the pieces together again after being robbed or vandalized, "the convicted are languishing in a jail cell, at taxpayers' expense, or are out on probation, and the victim receives nothing," he says.

Reverse that situation and put the burden on the back of the criminal, Hertel suggests.

His proposal would allow the presiding judge, prosecutor or defense attorney to seek restitution payments. The judge would be authorized to approve any such request and order a payment schedule.

Hertel says payment would be made during the probationary period and, in some cases, could replace a jail sentence.

"This law has been in effect in Minnesota for two years," he says. "During that time, the program has had only one failure and is considered extremely successful."

The failure? A parolee, arrested for passing bad checks, sent restitution checks to the county clerk. They bounced.

Studying U.P. Styles

Mining, shipping and lumbering—the industries of Michigan's upper peninsula—may have had some effect on the way folks built homes and churches in that part of the state years ago.

The Department of State, in conjunction with Michigan State University, is looking into that prospect this summer as part of a history division's state-wide survey of historic structures and districts.

An architectural survey team will be working in several U.P. graphing sites. They'll pay particular attention to any impact the area's industries had on building.

One More Year

When you next renew your driver's license, you'll probably get the new one to use for four years instead of three—unless you're what Secretary of State Richard Austin calls a "problem driver."

The four-year license proposal, recently approved by the legislature, won't mean a reduction in traffic safety, Austin says. That's because problem drivers will not be able to take advantage of the license extension. They'll have to renew their licenses every two years.

Telephone Your Club News
 To 475-1371.

JUST REMINISCING

Items Taken from the files of The Chelsea Standard

4 Years Ago...

Thursday, July 8, 1971—

The enthusiasm of members of North Lake United Methodist church was evident at their groundbreaking ceremonies held Thursday for the new Educational Unit which is being built behind the church on North Territorial Rd.

Bonnie Powers is accompanying a group of Washtenaw county 4-Hers to the National 4-H Citizenship Shortcourse in Washington, D.C. The group, which is sponsored by the Ann Arbor Kiwanis Club, the Washtenaw 4-H Teen Leader and the County 4-H Service Clubs plans to learn the fundamentals of our government's operation.

David G. Conklin was awarded a varsity letter for his participation on the 1971 Central Michigan University golf team. Conklin is a freshman at CMU this year.

Mr. and Mrs. Floyd Fowler, 2350 Dancer Rd., were among the 16,000 persons who attended the 56th annual Convention of Kiwanis International held in San Francisco, Calif.

14 Years Ago...

Thursday, July 13, 1961—

A family gathering was held Sunday at the home of Mr. and Mrs. Erwin Wenk as a joint observance of the baptism of their grandson, Jeffrey Hause, and a farewell gathering for their son-in-law and daughter, Mr. and Mrs. Carleton Hause and their son who are leaving next week for Chula Vista, Calif., where Mr. Hause will be teaching in a junior high school.

Camp Crile was presented recently with two 60-piece sets of stainless steel tableware by the JC Auxiliary. This was given to Mrs. Eldon Heller, wife of the president of the Michigan Epileptic Society. Elton Guenther, Mrs. Duane Layher and Mrs. Merle Leach made the presentation.

Erwin Ruhl, son of Emil A. Ruhl of 11280 Island Lake Rd., was ordained at 3:30 p.m. Sunday, July 2, in St. Paul's Lutheran Church, Ann Arbor.

24 Years Ago...

Thursday, July 12, 1957—

With the Third Infantry Division in Korea, Sgt. Gerald R. Wenk is driver of the "Lucky 13" tank which returned safely after the crew killed approximately 300 Chinese during a recent two-hour battle. He is the son of Mrs. Eleanor Wenk, 136 Lincoln St.

William G. Kolb was re-elected for a three-year term as trustee on the Chelsea Agricultural School's Board of Education at Monday's annual school election.

Fred Kennedy and his neighbor,

Walter Kuhl, got the surprise of their lives this past week when they began digging what they thought was "a little drainage ditch" and ended up with a stream of water that poured out an estimated two million gallons of water in seven days.

Fire Chief Ted Balmer won the grand prize of \$50 in Jackson's Parade of Progress Saturday evening on his 1907 Deal car which was the oldest in the parade.

34 Years Ago...

Thursday, July 17, 1941—

The annual American Legion carnival will be held next week on the grounds at the corner of W. Middle and Wilkinson Sts. Included in the attractions will be "The Sky Man," with high swaying pole and aerial contortion act, which is said to be a real thriller.

Fred G. Broesamle and Herbert Wallace will leave Sunday for Houghton where Broesamle will attend the state convention of county supervisors and welfare boards, as a delegate from Washtenaw county.

Chelsea is again represented in NYA baseball in the Western Washington League. The American Legion, Post 31, is sponsoring the local nine as it did last year. Chelsea has lost one game, winning four, which puts the local nine in second place behind Ann Arbor's Edwards Bros. team which has been undefeated in five games.

About 60 representatives of the Koegerter family were present for their annual reunion on Sunday at Newport Beach, Portage Lake.

AGRICULTURE IN ACTION
 MICHIGAN FARM BUREAU

Rural Realists

This nation's farmers and ranchers are realists when it comes to international politics and foreign affairs.

That fact was evident at the recent annual meeting of the nation's largest farm organization—the American Farm Bureau Federation, held in New Orleans. Much of the discussion and debate there centered upon foreign affairs, upon foreign trade, foreign aid, and international relations.

International understanding, the delegates said, leads to international good will. They endorsed the exchange of views and information on a world-wide basis; they called for formal exchange programs involving both people and ideas.

The farmers and ranchers argued that the best kind of food-aid must center on providing technical and management know-how to developing countries, to allow them to feed themselves.

They made it plain that farm people are not at all enamored with many of the actions of the United Nations and questioned our paying the lion's share of the operating expenses while others with an equal vote in UN affairs pay little or nothing.

They argued that this country not become involved in what they called "U.N. type" world food aid programs. Said one delegate: "If we do so, we'll end up providing all of the food aid for countries whose only contribution will be their vote against us, even as they continue to refuse to do what's necessary to increase their own food production..."

"It's not that American farm people are callous about hunger," said another delegate to the meeting. "Rather, we temper this very real concern for others with an understanding of what stands in the way of truly effective food aid."

All appeared to agree that emergency food relief should have the highest priority in foreign aid programs, and some pointed out that it was farm people who first developed the "Food for Peace" program 20 years ago.

This program has become a mainstay, primary tool in our government's search for world peace.

Dial-A-Garden Topics Listed

Dial-A-Garden, with pre-recorded daily gardening tips, is in operation 24 hours per day, 7 days per week (except Friday mornings). The Dial-A-Garden phone number is 994-1122.

Friday, July 11 and week-end—Tomato Troubles.

Monday, July 14—Plant Cool Season Vegetables for Fall Crop.

Tuesday, July 15—When To Harvest Some Early Vegetables.

Wednesday, July 16—Preserving Green Beans.

Thursday, July 17—Controlling Corn Ear Worm.

Ann Arbor Art Association Plans Giant Garage Sale

Ann Arbor Art Association is preparing for what is hoped will be a major fund-raising project to benefit the fund for the renovation of the Walker Building, their new home. A giant "garage" sale will be held July 12 - 13 at the present headquarters, 2275 Platt Rd. Hours will be from 9 a.m. to 8 p.m.

The Association is collecting items for the sale now through July 11. A wide variety of donations have already been received ranging from toys and gadgets to trees, jewelry and even a tent-camper.

Anyone who would like to contribute saleable items (other than clothing) are asked to take them to the Platt building between the hours of 9 a.m. to 7 p.m. A pick-up service is also available by calling the Association office at 973-0590.

More than three million veterans and military service personnel have trained at college level during nine years of the current GI Bill compared with 2.2 million under 12 years of the World War II GI Bill.

CARPENTERING REMODELING

ALUMINUM SIDING - KITCHENS PATIOS - GARAGES

PHONE 475-7474

CHARLES ROMINE

Licensed Contractor
 18027 Old US-12
 Chelsea

U-M Alumni Association Serves 276,000 Grads

The Alumni Association serves the alumni body of more than 276,000 graduates and former students. There are four affiliated organizations: Clubs Council, a federation of 125 alumni clubs; Alumnae Council, representing women's activities, including 40 alumnae clubs; Class Officers and Leaders Council for junior programs; and Camp Council, which operates family camps for alumni at Camp Michigan and elsewhere. The Alumni Association publishes The Michigan Alumnus magazine, and sponsors 7-10 foreign tours annual as well as daily campus walking tours guided by students.

HOUSEHOLD & ANTIQUE AUCTION

The following items will be sold at public auction located 2 miles west of Chelsea on Cavanaugh Lake Rd. to Pierce Rd., north 1 1/4 miles to Bush Rd., east first place (turn on West Middle St. in Chelsea, go west to Cavanaugh Lake Rd.

SATURDAY, JULY 12

Commencing at 11:00 a.m.

PHONE STOCKBRIDGE 517-851-8042 **PRICE BROTHERS AUCTIONEERS** PHONE STOCKBRIDGE 517-851-8042

Antiques - Furniture - Old Barn - Tractor

Hotpoint electric stove.
 Hotpoint 12 cu. ft. refrigerator.
 Chrome dinette set and 4 chairs.
 Round dining table.
 Old buffet.
 Maytag wringer washer.
 Antique library table.
 Whirlpool automatic washer.
 2 antique dressers.
 Gold davenport, real nice.
 Formica top dinette set and 4 chairs.
 4-poster single bed complete.
 Drop leaf table.
 Oak dresser and mirror.
 Antique 1/2 size bed.
 Chest dresser and mirror.
 Singer portable sewing machine.
 Antique high boy dresser.
 2 mahogany lamp tables.
 2 cane bottom chairs.
 Old wash stand and rack.
 Antique cane rocker.
 Metal lawn chairs.
 Desk style sewing machine.
 Table lamps.
 Rug and pad.
 Treadle sewing machine.
 2 card tables.
 Blankets.

Antique wall mirror.
 Antique pitcher and bowl set.
 Oak library table.
 GE vacuum sweeper.
 Relaxer machine.
 GE portable stereo tape recorder.
 Small electrical appliances.
 Quantity books.
 Old carriage robes.
 Old picture frames.
 Cooking utensils.
 Quantity nice antique dishes.
 Vases.
 Old trunks.
 11 1/2 x 5 1/2 picture window.
 Set of work harness.
 Horse collars.
 Horse drawn bob sled.
 Steel fence posts.
 Hardwood lumber.
 Dandy Boy 5 h.p. garden tractor.
 2 power lawn mowers.
 30x40 old barn for siding.
 Forks.
 Large amount of small items.
 1952 Ford 8N tractor, good rubber, good condition.

NOTE: In this sale, 3 generations of personal items.
 TERMS: Cash or Check. Lunch on Grounds.
 Not responsible for accidents or items after sold.

Ed & Virginia Visel
 OWNERS

HURON FARMS ANNEX

1803 SUPERIOR RD.

Off E. Huron River Drive - 1 mile west of Ypsilanti

PICK YOUR OWN SOUR CHERRIES
 18c lb.

SOUR CHERRIES, pitted

in 30 lb. tins or in your own container
 Pitted - your container28c lb.
 Custom pitted5c lb.
 30 lb. tin\$8.20

AT THE GOLD BARN

3431 N. ZEEB RD.

Off I-94 - North 3 miles to the Gold Barn

426-3910 or 426-3919

FRESH BLUEBERRIES
 40c lb.

Pick Your Own SWEET CHERRIES
 35c lb.

Frozen APPLE CIDER
 \$1.75 gal.

ORDER CHERRY JUICE
 for wine
 35c gal.

DUNBAR'S DEXTER LOCKER

PAUL DUNBAR, OWNER

8083 MAIN ST., DEXTER

PHONE 426-8466

BUY NOW
 BEEF - PORK - VEAL - LAMB

PORK SIDES

89¢ lb. (Avg. wt. 100 lb.)

INCLUDES:

- | | |
|-------------------|----------------------------|
| 3 pkg. liver | 1 pkg. spareribs |
| 1 pkg. neckbones | 1 pkg. pork shoulder roast |
| 4 pkg. pork steak | 13 pkg. pork sausage |
| 5 pkg. pork chops | 5 pkg. side pork |
| 1 pkg. pork head | 1 pkg. hocks |
| 1 pkg. feet | 12 lb. fat back |

FREEZER SPACE AVAILABLE - \$2.50 per month

We Also Sell in Small Quantities

Discount to Civic Groups - We Accept Federal Food Stamps

CUSTOM SLAUGHTERING & PROCESSING

Save Heating Bills By Filling Up Holes, Cracks

Were your heating bills higher than your neighbor's last winter? Were some parts of your house very cold even when the heat was on? Was the house cold and hard to heat on a windy day? If you answered "yes" to any of these questions, you should start planning now to save money and energy next winter. But don't wait long—many money-saving projects need to be done now while the weather is warm.

If your home is not properly insulated, by planning ahead, you can save up to 50 percent of your fuel bill. If you use the heating and insulating ideas in **Save Energy, Save Money**, the booklet is published by the Community Services Administration (formerly the Office of Economic Opportunity) and is available free from Consumer Information, Dept. 32, Pueblo, Colo. 81009. The projects described are easy and may keep you warmer for less next winter.

For instance, did you know that small holes around doors, windows and frames can let as much cold air into your house as a large, open window? To keep more cold air out, check around windows, door frames and chimneys. If you find cracks, you can fill them easily with caulking. But be sure to do this work before the temperature drops; caulking must be done in 45-degree-plus weather.

Before you caulk, clean away any grease, dirt, or old caulking. The best caulking to use is the "latex" type. It's inexpensive and lasts five years or more. Smaller cracks can be filled with "cord caulking." For larger cracks, apply caulk with a "caulking gun." Large, deep holes should be filled first with a rope-like material called "oakum." All of these materials are available at hardware stores. Also check, on a windy day, for

air coming through door and window seams. If you feel a leak, buy some "felt hair" weatherstripping. For windows, tack the stripping along the edge where the window meets the casing. Tack weatherstripping around the molding to keep out cold air around doors. The felt hair is inexpensive and really stops leaks.

Save Energy, Save Money (free) is one of almost 250 selected Federal publications listed in the current edition of the **Consumer Information Index**, Published quarterly by the Consumer Information Center of the General Services Administration, the Index is available free from Consumer Information, Pueblo, Colo. 81009.



THE INDIANS played a game of ball Tuesday evening against the Pirates in the Chelsea Recreation T-Ball league. Pictured from left to right in the front are Jennifer Cattell, David Thompson, Jimmy Toon, Andy Koszegi, Kirk Eubanks,

Robbie Abdon, and Matt Koenn. Standing from left to right, Charlie Koenn, Steve Fleischmann, Mark Forath, Marvin Fisher, Mike Ball and Jeff Larson. Coaching and managing the team is Ken Larson.



PRE-GAME STRATEGY: Chelsea Milling's Captain Dave Sweet (left) and pitcher Gary Hicks discuss strategy before upsetting Bennett Installation.

WASHINGTON DISPLAY

George Washington took command of the Continental Army at Cambridge, Mass., on July 3, 1775. His troops then numbered 14,500. Over the next eight years, with the man from Mount Vernon at its helm, the army was to endure

near-starvation and suffer devastating defeats before going on to final victory at Yorktown. A fitted campaign chest and folding camp bed used by General George Washington during the Revolutionary War is now on display at the Henry Ford Museum, Dearborn.

Nutritious "Menu Change" For Your Dog

Wayne Dog Food supplies the "menu change" that your dog will appreciate... Lots of natural taste appeal. And you know they're getting the scientific food values professional dog owners and kennels have been feeding for years.

Special combination of fats provides extra energy for work or play. Feed Wayne dry, right from the bag. No mixing necessary. Try it soon.

50¢ OFF

ON ANY BAG OF WAYNE PET FOOD



Wayne DOG FOOD
Bite Size, Meal Form or Chunk Size in 5, 10, 25 & 50 lb. bags
From ALLIED MILLS, The Innovators



McCALLA FEED SERVICE

Phone 475-8153

12875 Old US-12, Chelsea

Webster Woman Wins \$100,000 in State Lottery

A Webster township woman who says she "never won anything in my life" was the happy winner of last week's \$100,000 Triple Play Drawing in the Michigan lottery. Mrs. Louise Estleman, 56, bought her winning ticket at the Dexter Party Store and becomes the winningest person in the local area in the popular lottery. The Dexter Party Store also was a winner and receives \$5,000 for selling the winning ticket. A distribution clerk at the main branch of the Ann Arbor Post Office, Mrs. Estleman plans to keep her job until retirement. She plans to put her money in the bank for a while before she decides what to do with it. Her husband, Laevett, is a retired truck driver. They have two sons, Charles, 27 and Loren, 22. She says, "I have bought two 50-cent tickets and one \$1 ticket every week since the lottery began. I really never expected to win—it was just a matter of being in the game."

Subscribe today to The Standard!

The Chelsea Standard, Thursday, July 10, 1975 3

Switzerland and Italy meet on the summit of the Matterhorn, 14,680 feet up. The Swiss continue to claim that their side of the peak is 43 inches higher than the Italian side.

NUTRITIOUS MILK
There's plenty of nutrition to think about when you're drinking milk. Each eight ounces of milk contains about eight grams of protein plus calcium and vitamins.

SUMMER SALE

BAR-B-Q GRILLS
25 % Off

PICNIC BASKETS and SUPPLIES
25 % Off

GIFTWARE
25% to 50% Off

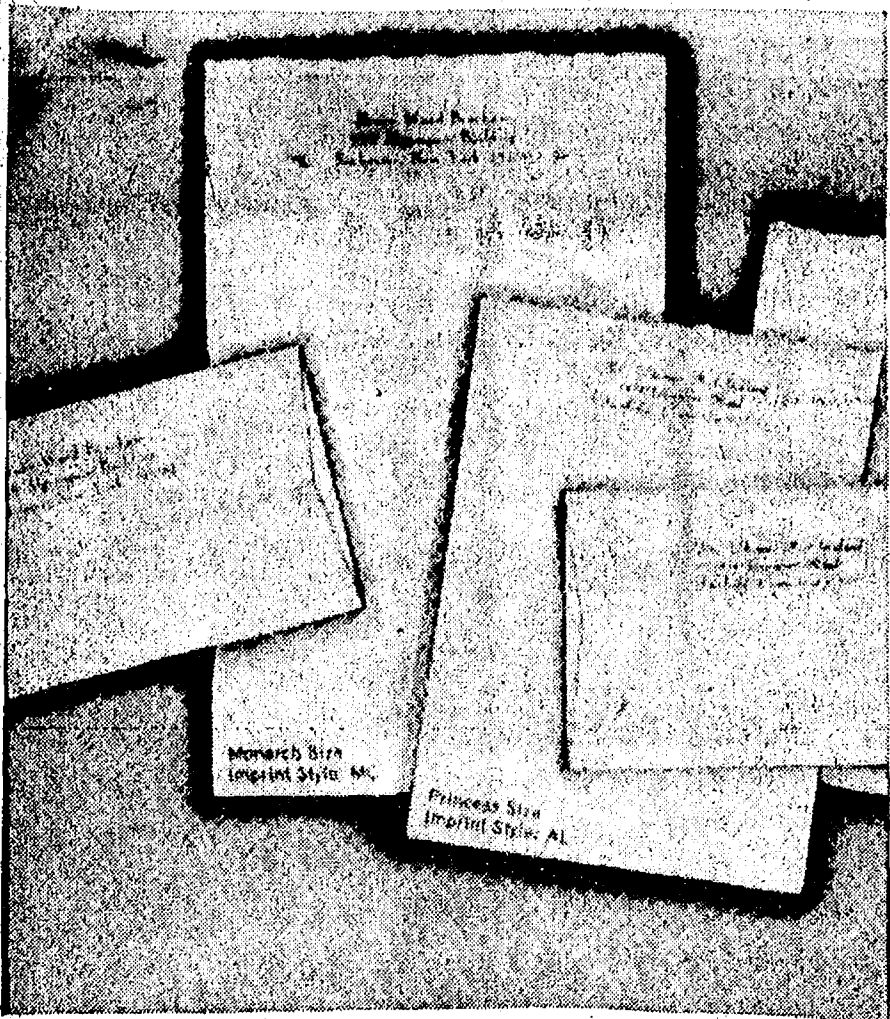
DAILY: 9 a.m. to 6 p.m., Sunday 10 to 3

BEAL'S ACE HARDWARE

103 E. Main St.

Manchester, Mich.

The Chelsea Standard SAVE 50%



July Only
Rytex Deckle Edge Vellum
Personalized Stationery

Sale Price **\$5.95** (reg. \$12.00)

Such good taste... Such good value. Your name and address custom-printed on genuine vellum paper that is subtly deckle edged in the manner of fine books. Paper choice of Windsor White, Antique Grey or Wedgewood Blue. Choice of print styles as shown with ink color of black or blue. 150 Princess sheets, 100 envelopes or... 100 King size sheets, 100 envelopes

Special Bonus Value:

50 extra, unprinted, sheets for use as second pages... only \$1.00 with order.

MAIL ORDER COUPON

THE CHELSEA STANDARD
CHELSEA, MICH. 48118

DECKLE EDGE VELLUM... boxes at sale price of \$5.95 per box

SPECIAL BONUS: ☐ (check) include 50 matching, unprinted, sheets for only \$1.00 a box more.

Check ☐ Princess White (9400) ☐ King White (9100)

Blue ☐ Princess Blue (9450) ☐ King Blue (9150)

Grey ☐ Princess Grey (9460) ☐ King Grey (9160)

Ink ☐ Black Ink ☐ Blue Ink Imprint: ☐ Imprint MC ☐ Imprint AL

Print Name _____

Street _____ State _____ Zip _____

Send by: _____

Phone _____ State _____ Zip _____

Charge ☐ Payment enclosed (Sorry, no C.O.D.'s)

(Please include Michigan state sales tax)

Jiffy market

Big Enough To

Serve You . . . Small Enough To Know You!

TOP VALUE FOODS - GUARANTEED SATISFACTION - COURTEOUS SERVICE

COMPLETE FRESH MEAT DEPT. - USDA CHOICE BEEF - THE FINEST OF FRESH PORK

NOTICE: Local Farm, Corn Fed Beef Available By the Side.

U.S.D.A. CHOICE

SIRLOIN STEAKS
\$1.89 lb.

FARMER PEET'S

HAM SLICES
Round Boneless Lean \$1.49 lb.

U.S.D.A. CHOICE

ROUND STEAKS
\$1.69 lb.

THE FINEST IN FRESH HAMBURG - GROUND FRESH SEVERAL TIMES DAILY

CAMELOT

LIVERWURST
59¢ lb.

CAMELOT

Chunk Bologna
79¢ lb.

CAMELOT

Braunschweiger
59¢ lb.

U.S. CHOICE

SHORT RIBS
69¢ lb.

COLD BEER - WINE - LIQUOR - ICE - CHARCOAL

COMPLETE LINE PICNIC SUPPLIES AT SUPERMARKET PRICES

KLEEN-MAID

BREAD
1 1/4-Lb. Loaf 37¢

COCA-COLA
8 Pack 12-Oz. Cans \$1.37

FARM-MAID
HOMOGENIZED MILK
\$1.19 gal.

LADY CAMELOT

SHEER KNEE HIGHS HOSIERY
2-Pair Pkg. 99¢

BARGAIN PRICES
ON SEVERAL BRANDS
BEER

POTATOES
NEW MICHIGANS
10-Lb. Bag \$1.09
From SUNNY CREST FARMS

JIFFY MARKET MARATHON GAS PUMPS

REGULAR GAS 55.9 gal.
Includes All Taxes

PREMIUM 59.9c gal.

LEAD-FREE 57.9c gal.

2-CYCO GAS PUMPS

An excellent gas for all 2-cycle engines.

Please Don't Blame Us for High Gas Prices!!

THANK YOU for YOUR BUSINESS

Open With Complete Service, 7 Days A Week

TOP VALUE FOODS 7 a.m. MORNING to 10 p.m. NIGHTS

Sale Prices July 10 - July 13

First Helicopter

The first practical helicopter set a world's endurance record by staying aloft for one hour and 3 minutes in May, 1941. This revolutionary vehicle was designed and first flown by Igor Sikorsky in 1939. The experimental craft had a fabric-covered fuselage, a forward flying speed of 70 miles per hour and could even fly backward at 20 miles per hour. This historic Sikorsky helicopter is now part of the comprehensive collection of non-military aircraft on display at Henry Ford Museum, Dearborn.

Eligibility expires Aug. 1, 1975 for 2.7 million veterans discharged between April 3, 1970, and Aug. Veterans Group Life Insurance through the Veterans Administration.



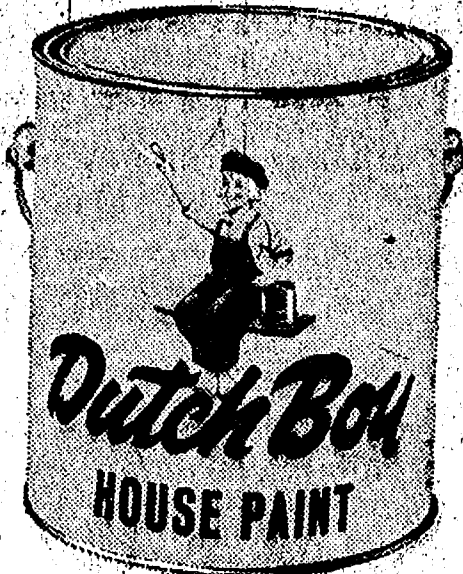
For the Family That Loves the Good Life

Let us help you find the home you've been dreaming of... or a choice building site.

Real Estate One.
OF WASHTENAW
REALTOR

AL KLEIS 475-7322 1196 M-52, Chelsea 475-8693

SAVE MONEY WITH A QUALITY PAINT



COVERS MORE... LOOKS BETTER... LASTS LONGER!

That's right! Quality Dutch Boy House Paint actually saves you money. It covers more surface area because it has superior hiding power. It looks better, too! Its tough, brilliant finish wears slowly and evenly. Resists cracking and peeling. Keeps costly maintenance way down. So get the most for your money! Get quality! Get Dutch Boy House Paint!

more years to the gallon

Try our new Dutch Boy Super White House Paint. New formula prevents chalk staining on such surfaces as brick, stucco, etc.

You will remember the quality of Dutch Boy paints long after the price is forgotten.

MERKEL Home Furnishings

+ Services in Our Churches +

CONGREGATIONAL CHURCH
(United Church of Christ)
The Rev. Carl Schwarm, Pastor
Sunday, July 13—
9:30 a.m.—Worship.

ZION LUTHERAN CHURCH
Corner of Fletcher, Waters Rds.
The Rev. John R. Morris, Pastor
Sunday, July 13—
7:30 p.m.—ALCW MidMonth Bible study at C. Schoenbergs.

FIRST ASSEMBLY OF GOD
The Rev. Thade R. Thodeson, Pastor
Every Sunday—
9:45 a.m.—Sunday school.
11:00 a.m.—Worship service.
7:00 p.m.—Midweek services.
Every Wednesday—
7:00 p.m.—Christ's Ambassadors.

ST. MARY CATHOLIC CHURCH
The Rev. Fr. David Philip Dupuis, Pastor
Mass Schedule:
Every Saturday—
4:00-5:00 p.m.—Confessions.
7:00 p.m.—Mass.
Immediately after 7 p.m. Mass—
Confession.

FIRST CHURCH OF CHRIST
SCIENTIST
1883 Washtenaw Ave., Ann Arbor
Every Sunday—
10:30 a.m.—Sunday school, morning service.

ST. JOHN'S
UNITED CHURCH OF CHRIST
Rogers Corners
The Rev. Carl Asher, Pastor
10:30 a.m.—Worship service.

IMMANUEL BIBLE CHURCH
145 E. Summit St.
The Rev. LeRoy Johnson, Pastor
Every Sunday—
9:45 a.m.—Sunday school, nursery provided.
11:00 a.m.—Morning worship, nursery provided.
7:00 p.m.—Evening worship.
Every Wednesday—
7:30 p.m.—Family hour, prayer meeting, and Bible study.

CHURCH OF CHRIST
13601 Old US-12, East
Evangelist John M. Hamilton.
Every Sunday—
10:00 a.m.—Church school.
11:00 a.m.—Worship service.
Nursery will be available.
6:00 p.m.—Worship service.
Every Wednesday—
7:30 p.m.—Bible study.

ST. PAUL
UNITED CHURCH OF CHRIST
The Rev. R. J. Ratliff, Pastor.
Thursday, July 10—
7:30 p.m.—Nominating committee.

OUR SAVIOR LUTHERAN CHURCH
1515 S. Main, Chelsea
The Rev. William H. Keller, Pastor
Friday, July 11—
7:00 p.m.—Bible-Alten wedding.
Sunday, July 13—
10:00 a.m.—Church school, three year-olds through kindergarten.
10:00 a.m.—Worship service.
Congregational meeting.
Tuesday, July 15—
7:30 p.m.—Council.

CHURCH OF JESUS CHRIST OF LATTER-DAY SAINTS
Meetings at
St. Barnabas Episcopal Church
20500 Old US-12
Every Sunday—
11:00 a.m.—Priesthood meeting.
12:30 p.m.—Sunday school.
5:30 p.m.—Sacrament meeting.

CHELSEA BAPTIST CHURCH
577 Wilkinson St.
The Rev. James Stacey, Pastor
Every Sunday—
9:45 a.m.—Sunday school for the whole family.
11:00 a.m.—Morning worship service and children's church.
7:00 p.m.—Evening service, informal singing, sharing, study and discussion. (Nursery care provided for all services).

ST. THOMAS
EVANGELICAL LUTHERAN
Ellsworth and Haab Rds.
The Rev. Jerome Dykstra, Pastor
Sunday, July 13—
9:30 a.m.—Banner making.
10:45 a.m.—Worship service.

ST. BARNABAS
EPISCOPAL CHURCH
20550 Old US-12
The Rev. Jerrold Beaumont
B.S.P., Priest
Rector 475-2003
Church 475-8818

BAHA' FIRESIDE
Every Thursday—
8:00 p.m.—At the home of Toby Peterson, 205 S. Main St. Anyone wishing to learn about the Baha' faith is welcome.

FIRST UNITED
PRESBYTERIAN CHURCH
Unadilla
The Rev. T. H. Liang, Pastor
Every Sunday—
9:45 a.m.—Sunday school.
11:00 a.m.—Worship service.

BETHEL EVANGELICAL AND REFORMED CHURCH
(United Church of Christ)
Freedom Township
The Rev. Roman A. Reineck, Pastor
Every Sunday—
10:00 a.m.—Worship service.

METHODIST HOME CHAPEL
The Rev. R. L. Clemans, Pastor
Every Sunday—
8:45 a.m.—Worship service.

GREGORY BAPTIST CHURCH
The Rev. Paul White, Pastor
Every Sunday—
9:45 a.m.—Sunday school.
11:00 a.m.—Morning worship.
6:00 p.m.—Young people.
7:00 p.m.—Evening worship.
7:30 p.m.—Thursday mid-week worship service.

ST. JACOB EVANGELICAL LUTHERAN CHURCH
12501 Rietmiller Rd., Grass Lake
The Rev. Andrew Bloom, Pastor
Every Sunday—
9:00 a.m.—Worship service.
10:15 a.m.—Divine services.

WATERLOO
FIRST UNITED METHODIST
Parks and Territorial Rds.
Every Sunday—
9:15 a.m.—Morning worship.
10:15 a.m.—Sunday school.

FIRST UNITED
METHODIST CHURCH
The Rev. Clive Dickins, Pastor
Sunday, July 13—
10:00 a.m.—Worship service.
(Nursery provided) Church school for children two years old through the first grade.
11:00 a.m.—Punch hour.
Tuesday, July 15—
9:30 a.m.—Charismatic Bible sharing group will meet in the educational unit.
Friday, July 19—
7:00 p.m.—Watson-Williams wedding rehearsal.
Saturday, July 19—
7:00 p.m.—Watson-Williams wedding.

NORTH SHARON BIBLE CHURCH
Sylvan and Washburne Rds.
The Rev. William Enalen, Pastor
Every Sunday—
10:00 a.m.—Sunday school.
(Nursery will be available.) Junior church classes.
11:00 a.m.—Worship service.
6:00 p.m.—Senior High Youth meeting. Youth Choir.
7:00 p.m.—Evening worship service. (Nursery available.)
All services interpreted for the deaf.

NORTH LAKE
UNITED METHODIST CHURCH
The Rev. David Stiles, Pastor
Sunday, July 13—
7:30 a.m.—Early morning worship.
10:00 a.m.—Worship service.
11:00 a.m.—Church school.

SALEM GROVE
UNITED METHODIST CHURCH
3320 Notters Rd.
The Rev. Gerald R. Parker, Pastor
Every Sunday—
9:30 a.m.—Sunday school.
Every Wednesday—
10:30 a.m.—Worship service.

ST. JOHN'S EVANGELICAL AND REFORMED CHURCH
(United Church of Christ)
The Rev. Virgil King, Pastor.
Every Sunday—
10:30 a.m.—Worship service.
Sunday school and catechism class.

CHELSEA MEDICAL CENTER
The Rev. Ira Wood
Every Other Wednesday—
1:30 p.m.—Worship service.

WATERLOO VILLAGE
UNITED METHODIST CHURCH
8118 Washington St.
Every Sunday—
10:00 a.m.—Sunday school.
11:15 a.m.—Worship service.

New SE Michigan Tourist Guide Now Available

You can have a super vacation this summer in your own backyard, according to the Southeast Michigan Travel and Tourist Association. Simply write to them for their new issue of "Travelun, 1975," a four-color guide to the nine-county Detroit and Southeast Michigan area.

"It's packed with information on things to see and do within 100 miles of Detroit, or in Detroit, and it's for every member of the family," Sidney L. Baker, association president, said.

Baker explained that the compact guide carries a complete description of indoor and outdoor events, attractions, accommodations, night life, and sightseeing events and is designed for both the business and pleasure traveler.

"Research has shown us that our area is a prime attraction for travelers from just outside our own state as well as for our own citizens," Baker said. "This book is designed for both, so that everyone can see that it is not necessary to travel hundreds of miles to enjoy an exciting, relaxing vacation. We offer fun for a few days, a week-end or a longer stay, and we have the variety to prove it."

The "Travelun" guide may be obtained free by writing the Association at State of Michigan Plaza, Room 312, 1200 Sixth Ave., Detroit 48226.

ENJOY AN EVENING IN MANCHESTER 22nd Annual CHARCOAL CHICKEN BROIL THURSDAY, JULY 17

Serving from 4 p.m. to 8 p.m.

Prepared To Serve 10,000 at Manchester Athletic Field (Midway Between Jackson and Ann Arbor, 12 miles south of Chelsea)

Butter basted, slow-broiled one-half chicken deliciously prepared on four 100 foot long charcoal pits. Free parking, shuttle bus service to Athletic Field. Fun... No long waiting lines. Shelter if it rains. Quick service.

COMPLETE DINNER OR TAKE-OUT
\$2.75 Advance Ticket \$3.00 at the Gate

Business places and workers have tickets. Profits always used for youth projects.

CHELSEA VILLAGE COUNCIL PROCEEDINGS

July 1, 1975
Regular Session.
This meeting was called to order by President Pennington.
Present: Administrator Weber, President Pennington and Clerk Neumeier.
Trustees Present: Borton, Dmoch, Johnson and Rowe.
Others Present: Zoning Inspector Gottra, Police Chief Meranuck, C. D. Director Wade, and Mr. and Mrs. Byron Smith.
The minutes of the Regular Session of June 17, 1975 were read and approved.
The minutes of the Special Session of June 24, 1975 were read and approved.
The minutes of the Special Session of June 25, 1975 were read and approved.
A letter was received from IPS-SCO for Property Tax Exemption under Public Act 198 of 1974. This was discussed. No official action was taken at this time.
A letter was received from the Michigan Department of State Highways regarding the proposed improvements to the intersection of M-52 and Old US-12. This work could not be done this fiscal year but preliminary planning is being done for a possible 1976 completion.
The Council discussed a new Sewer Ordinance and reviewed the ordinance prepared by Finkbeiner, Pettis and Strout. Further study is necessary before action can be taken.
The Village Administrator sent a letter to Michigan Consolidated Gas Company regarding the backfilling and reseeded that has not been completed in their construction areas in the Village.
A letter was received from Palmer Motor Sales, Inc., explaining the reasons for the increased price of the fire truck.
Motion by Dmoch, supported by Johnson, to authorize payment of bills as submitted. Roll call: Yeas all. Motion carried.
Motion by Rowe, supported by Borton, to adjourn. Roll call: Yeas all. Motion carried. Meeting adjourned.
Thomas Neumeier, Village Clerk.

Section 4.4.3 paragraph C.2 (a) (b).
Roll call: Yeas all. Motion carried.
Motion by Dmoch, supported by Borton, to adjourn. Roll call: Yeas all. Motion carried. Meeting adjourned.
Thomas Neumeier, Village Clerk.
Subscribe today to The Standard!

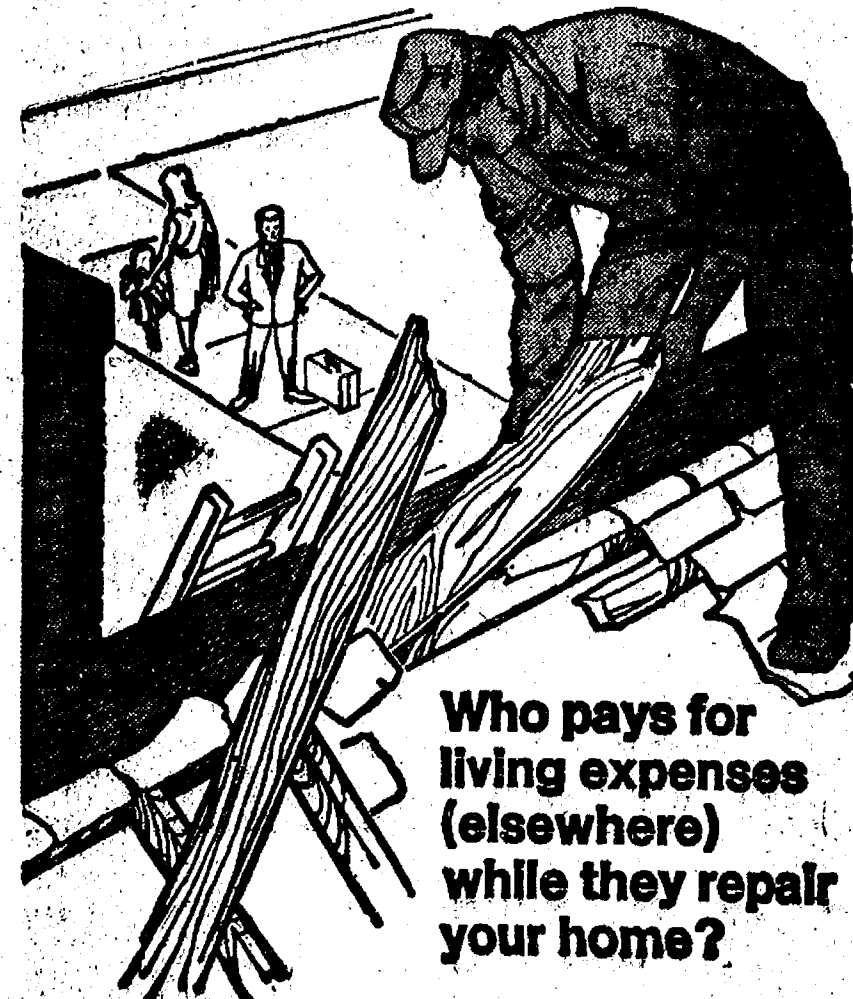
DISCOUNT PRICES

LEWIS JEWELERS

WATCHES - DIAMONDS - JEWELRY - SILVER
HALLMARK CARDS - GIFTS - CLOCKS - RINGS
HUMMEL DEALER - LLAPRO DEALER.

Expert Watch Repairs - Jewelry Repairs

MAPLE VILLAGE SHOPPING CENTER
255 N. MAPLE - ANN ARBOR, MICH.
Phone 994-5111



Most policies provide the coverages you expect—fire, lightning, storms, riots, vandalism and the like. They cover the cost of repairs due to these losses. But have you thought about the cost of living elsewhere if your home has to be repaired or rebuilt? It could run into hundreds of dollars. Or, it could be covered in black and white in our Homeowners Policy, so we would pay those extra living expenses! Give us a call. We'll put your home insurance all together in one policy for convenience and saving's sake.

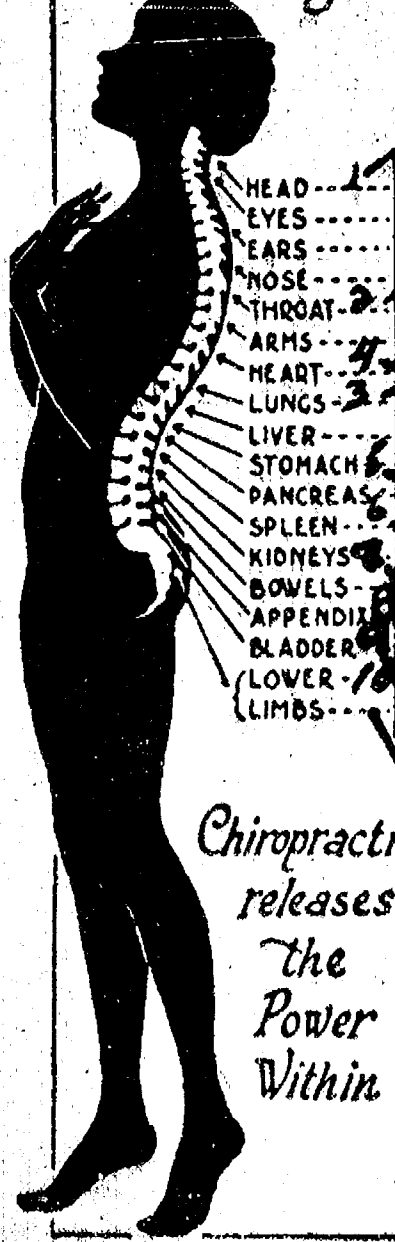
its better
altogether

A. D. MAYER AGENCY, INC.

115 PARK ST., CHELSEA
BOB BARLOW, AGENT
PHONE 475-2030

Auto-Owners Insurance
LifeHomeCarBusiness

The Spine is the Human Switchboard controlling Health and Vigor



CHIROPRACTIC FOR LIFE

CHIROPRACTIC CENTER

7970 CLARK LAKE ROAD
CHELSEA, MICHIGAN 48118

PHONE (313) 475-7633

YOUR LIFELINE CHART

1. A slight "pinching" of nerves at this point can cause headaches, some eye diseases, ear problems, insomnia, abnormal blood pressure, colds, hay fever, sinus trouble, nervousness, dry or stiff neck, some types of arthritis, colic in babies, glandular trouble, etc.
2. A nerve difficulty in this part of the spine can be the cause of so-called throat trouble, neuralgia, pain in the shoulder and arms, gopher, nervous prostration, etc.
3. In this part of the spine, a "pinched" nerve can cause so-called bronchitis, pain between the shoulder blades, rheumatism and neuritis of the arms, shoulder, or hands, bursitis, etc.
4. A blocked nerve at this point can cause so-called nervous heart or fast heart, asthma, difficult breathing, bronchial congestion, etc.
5. Stomach and liver trouble, pleurisy and a score of other troubles, can be caused by pressure in this part of the spine.
6. Nerve pressure at this point can cause gall bladder problems, dyspepsia or gas of upper bowels, shingles, hiccups, etc.
7. Certain kidney problems or diseases, eruptions and other skin diseases can be caused by nerves being pinched in the spinal openings at this point.
8. Chiropractic adjustments here often helps such troubles as so-called lumbar, constipation, colitis, etc.
9. Nerve pressure at this point can cause bladder frequency, prostate problems, lower bowel and abdominal pains.
10. A slight slippage of one or both of the hip bones or the sacrum may cause so-called sciatica, leg or knee pains, and many other leg problems.

Chiropractic releases the Power Within

TWO DOCTORS OF CHIROPRACTIC TO SERVE YOU IN THE CHELSEA AND SURROUNDING AREA: DIRECTOR DR. RAY ELWART AND DR. TONY LAFRAMBOISE... 6 DAY A WEEK OFFICE... 475-7633.



INVITATIONS or ANNOUNCEMENTS...

Let us provide you with the very finest printed or engraved invitations and announcements. Make certain that your wedding stationery is of top quality and conforms to correct social requirements. We can advise you on these important details.

Social Printing Department

THE CHELSEA STANDARD
300 NORTH MAIN ST. PHONE 475-1371



Inverness Ladies Day Golf Report

Inverness Ladies Day golfers played a nine hole round of golf July 3. First flight winners are Evelyn Hunter, low gross and Eleanor Reynolds and Liz Frisinger who tied for low putts. Second flight, Millie Townsend won for low gross and Dorothy Foster for low putts. In the third flight division, Toni Wilson won the low gross and Evelyn Lantis had low putts.

Curtis Reunion

The second annual Curtis family reunion was held Sunday, July 6 at the home of Mr. and Mrs. Norman Curtis of Sharon Hollow Rd. Forty-one members of the family from Chelsea, Dexter, Jackson, Manchester, Grass Lake and Harrison gathered for a picnic at the Curtis home. Next year's reunion to be held the second Sunday in July will be at the home of Mr. and Mrs. Harold Wahl of Grass Lake.

The Veterans Administration during fiscal year 1976 plans to spend a record \$3.9 billion on its hospital and medical care program.



PRIZE-WINNER: This drawing by 17-year-old Glenn Passow of Chelsea High school was selected as the third-place winner in the art competition for the 1975 International Special Olympics to be held Aug. 7-11 at Central Michigan University. The photo, tops among 200 entries by mentally retarded youth from Michigan, will earn Glenn a bronze medal at the International Games. In addition, the picture, done in bold colors, will be featured in an International Special Olympics art show during the games.

Two CHS Students Chosen for International Special Olympics

Kathy Buck and Glenn Passow have been chosen to participate in the 1975 International Special Olympic Games, Aug. 7-11 at Central Michigan University in Mt. Pleasant.

They are among 3,000 youngsters and young adults from all over the world entered in the competition.

Kathy will perform in the free exercise and balance beam, while

Glenn will illustrate his expertise in swimming competition; the 25- and 50-yard freestyle.

Their coach and instructor Nancy

Porath will accompany them to Mt. Pleasant for the five-day event. Special Olympics, founded and co-sponsored by the Joseph P. Kennedy, Jr. Foundation, is a program of athletic competition and training for the mentally retarded.

Phoebe Circle

Phoebe Circle met Monday, July 2 in the Crippen Building of the Chelsea United Methodist Home for their monthly meeting.

Ermah Van Valkenburg and Pearl Engelbrecht were hostesses for the dessert luncheon. Fifteen members and guests were present.

Following the luncheon a business meeting, presided by chairman Daniel Harris was held. Minutes of the last meeting were read and approved. Future events and topics of interest to members were discussed.

The next meeting of the group is scheduled to be held Sept. 17 with a pot-luck picnic luncheon at 12:30 p.m. at the home of Annabelle Closson.

HOME GARDENS

Brussels Sprouts are the least popular of the common vegetables with home and community gardeners. They also cause gardeners more problems than any vegetable except winter squash. Tomatoes are by far the most popular vegetable for home gardens, followed by string beans, onions, and cucumbers.

LOSE UGLY FAT

Start losing weight today or money back. MONADEX is a tiny tablet and easy to take. MONADEX will help curb your desire for excess food. Eat less - weigh less. Contains no dangerous drugs and will not make you nervous. No strenuous exercise. Change your life... start today. MONADEX cost \$3.00 for a 20 day supply. Large economy size is \$5.00. Also try AQUATABS: they work gently to help you lose water weight. AQUATABS - a "water pill" that works - \$3.00. Both guaranteed and sold by CHELSEA DRUG STORE 101 N. Main St. - Mail Orders Filled

What's Cooking in Michigan

By Larrestine Tritum
Michigan Dept. of Agriculture Marketing Information Specialist
Enjoy Michigan franks during national hot dog month. They're made of the finest ingredients and perfect for lazy summer days. Officials of the Michigan Department of Agriculture say Michigan franks are tops because Michigan law requires that only skeletal meats be used in processing, while federal law permits the use of animal by-products. To be sure the hotdogs you buy are produced in Michigan, read the label.

Frankfurter, weiner, frank or hot dog, no matter which name you prefer, it's America's most popular sausage meat product and demand is continually increasing. Consumers find franks easy to prepare, economical and flavorful. Nutritionwise, Michigan franks are outstanding because state law requires a minimum of 12 percent protein in addition to other nutrients.

Versatile Michigan franks may be pan-fried, broiled, cooked in the oven or on the grill. They're delicious eaten alone or combined with other foods in casseroles and sauces. The classic hot dog is a picnic favorite as well as standard cocktail fare.

Need suggestions for serving Michigan franks? Try tasty weiner kebabs. To prepare, cut franks into four pieces each. Marinate about 30 minutes in French dressing. Skewer the pieces alternately with bits of bacon, small canned pickled onions and green pepper chunks. Grill or broil, turning often.

For a superb dish, fit for a king, prepare Franks in Sour Cream. Cut one pound of franks into halves lengthwise and then each half into quarters. Saute 1/2 cup finely chopped onion in four thoroughly. Stir in 1 cups dairy sour cream and heat without stirring. Transfer to a tureen or chafing dish and garnish with 1/4 cup chopped parsley. Serve on toast rounds. Recipe serves four.

Social Security Hike

May Also Increase

Food Stamp Cost

Social Security recipients who also purchase food stamps may find they have to pay more for their food stamps beginning in July, when an 8 percent boost in Social Security payments takes effect.

Since the cost of food stamps is linked to the amount of net income received in each food stamp household, the social Security increase may mean an increase in the cost of food stamps for some families.

However, the Social Security increase generally will not affect the cost of food stamps in a household now receiving less than \$300 in Social Security benefits.

Persons who believe they may be affected can obtain information from their County Department of Social Services.

20% OFF
ON ALL
SUMMER MERCHANDISE

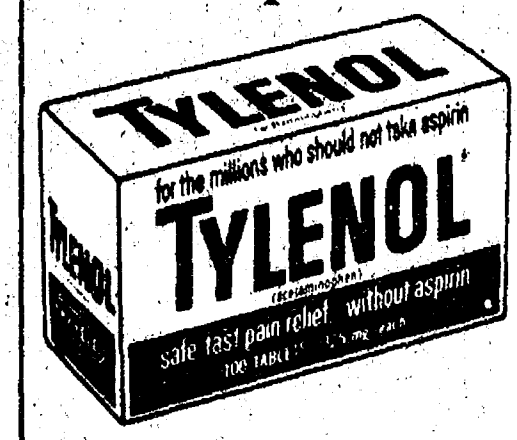
Bathing Suits - Sportswear
Day and Evening Wear

KAREN'S BOUTIQUE

118 S. MAIN ST.

CHELSEA

for the millions
who should not
take aspirin...



100's

99¢

Chelsea Pharmacy, Inc.

CARPET REBIRTH

Give your carpet a new lease on life
by cleaning it regularly.

JET SPRAY CARPET CLEANING

Use Your Phone 761-3025 or 475-1509
BankAmericard Ask for John Lixey.

MARK IV LOUNGE

PHONE 475-8141
1198 M-52 CHELSEA

OPEN BOWLING ANY TIME

OPEN HOURS:

Monday thru Friday 11 a.m. to 11 p.m.
Saturday 12 noon to 12 midnight
Sunday 2 p.m. to 10 p.m.

BOWLING BALLS, BAGS, SHOES
NOW IN STOCK.

CHELSEA LANES, Inc.

1189 M-52 CHELSEA
PHONE 475-8141

GRAND OPENING FRIDAY, JULY 11

KAREN'S ANTIQUES

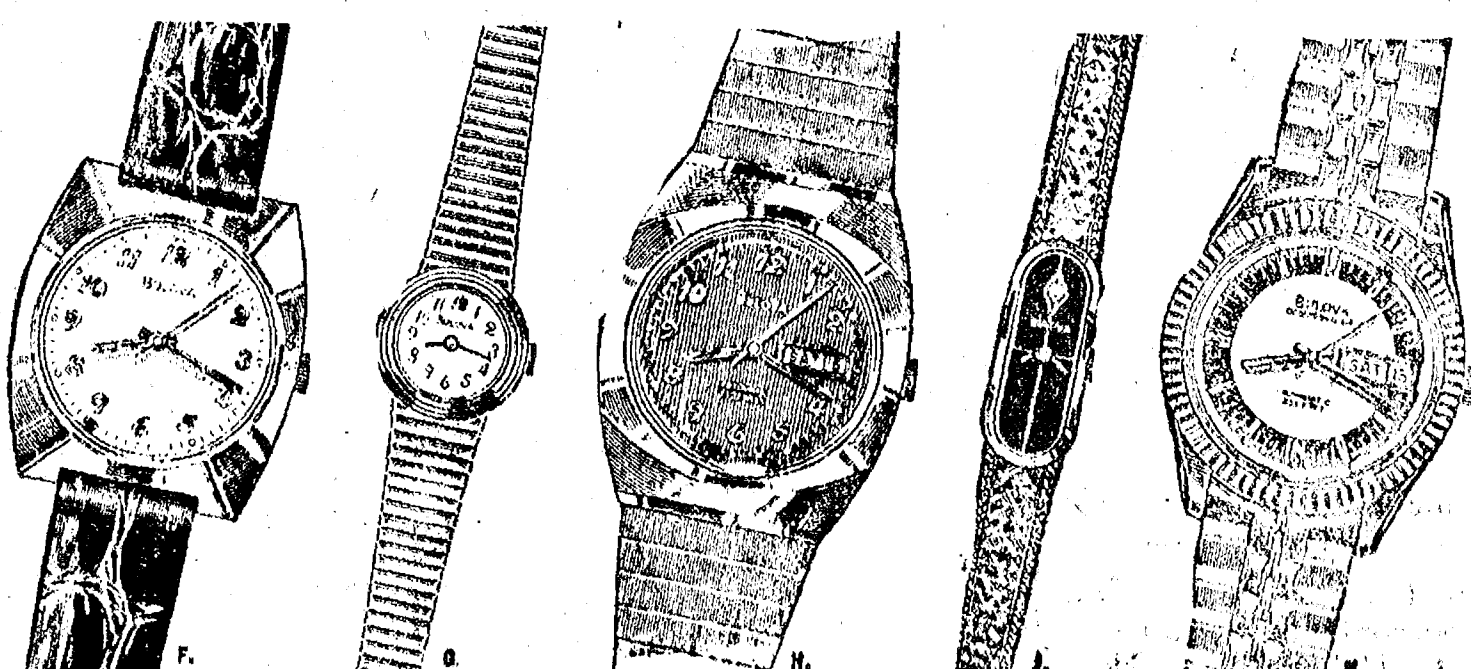
118 1/2 S. Main (Upstairs) Chelsea, Mich.

OPEN DAILY 9:30 to 5:30; Fridays Till 8:30

Bulova

The traditional graduation gift.
The greatest variety of styles for
both men and women, each
with its own special appeal.
From \$55 to \$1800.

Water resistant watch in gleaming
gold-tone finish. 17 jewels. \$65.
Lovely round-faced watch with linear
design bracelet. 17 jewels. \$85.
35 jewel automatic tests day and date.
In stainless steel. \$90.
Elegant dial beauty with diamond
marker at 12 o'clock. 17 jewels. \$105.
Tide and day automatic. depth-tested
to 333 feet. 17 jewels. \$120.



WINANS JEWELRY



THOMAS F. LACY

County Historical Society Elects Officers, Directors

Thomas F. Lacy has been elected president of the Washtenaw County Historical Society for a one-year term.

Re-elected executive vice-president was David Pollock; elected as treasurer, Hazel Proctor; and secretary, Ethelyn Morton.

Four new directors were elected: Rosemary Whelan, Irene Lawless, Mary Steffek, and Frank Wilhelm. Each year four new directors are elected for a term of three years.

The society which is more than 100 years old, collects and restores artifacts, antiques, and preserves the flavor of early life in Washtenaw county. A museum to house and display items of historical interest is the current top priority project for the society.

On June 14 the Society had its annual tour. Five Centennial Farms in the county were visited. 156 persons attended the tour, which was followed by a country style chicken dinner, at the Wesley United Methodist church in Whitmore Lake.

Magic Mirror Beauty Salon

Open Tuesday thru Friday
9 a.m. to 9 p.m.
Saturday, 8 a.m. to 3 p.m.

PHONE 665-0816

THE SUMMER SALE

IS ON!

LADIES SUMMER PANT SUITS,
DRESSES, SLACKS, SPORTS WEAR,
PURSES and CO-ORDINATES

ALL 1/2 OFF

MENS and BOYS
BIG SELECTIONS SHORT SLEEVE SHIRTS,
KNITS, TANK TOPS, SWIMWEAR
and SHORTS

ALL 1/3 OFF

INFANTS and CHILDRENS
SUMMER WEAR
1/3 and 1/2 OFF

Summer Shoes and Sandals

Ladies, Childrens and Mens

BIG REDUCTIONS!

**SAVE ON THIS
SUMMER SALE**

- at -

DANCER'S

Chelsea's Friendly Dept. Store

Community Calendar

Chelsea Child Study Club Workshop at the home of Nita Mills, Thursday, July 17 at 9:30 a.m.

Dance for Saturday Night Singles, Saturday, July 12, 25 and older. Pot-luck 7:30 p.m. 75 cents plus a dish to pass. Dancing 9-12 p.m. Orchestra "Guy and Gal" at the Ann Arbor Y, 350 South Fifth Ave. Information: 663-6068.

VFW Auxiliary, regular business meeting, Monday, July 14 at 8 p.m. at the VFW Hall.

Rummage sale Friday and Saturday, July 11-12, 9 a.m. to 4 p.m. North Lake Methodist church. Bake sale Saturday only. -acvx4

Zion Lutheran church Ice Cream Social, Tuesday, July 15 at 5 p.m. on the corner of Fletcher and Waters Rds. adv 4

American Legion and Auxiliary hospital equipment available by calling Guy Freysinger at 475-1961.

Pap tests are free for all area women, Tuesday mornings, at St. Joseph Mercy Hospital, Ann Arbor. Call American Cancer Society office, 668-8857 for appointment.

Chelsea Area Historical Society is still taking 1975 annual memberships. Applications for membership may be picked up at McKune Memorial Library, or write Box 334, Chelsea 48118, or telephone 475-7290 for information.

Humane Society of Huron Valley has dogs and cats for adoption. Owners may reclaim their lost pets. Phone 662-5585. Open from 9 a.m. to 5 p.m. daily; Sunday, 1 p.m. to 5 p.m. 100 Cherry Hill Rd., quarter-mile south of Plymouth Rd. at Dixboro.

Chelsea Co-op Nursery applications for 1976 classes are now being taken. For information, call Jearl Mull, 426-8822 or Gail Schuler, 428-7682. xad12tf

Rogers Corners Extension group picnic, July 13 at 12:30 p.m. at the Sharon Park.

Pilot Geriatric Arthritis Project, educational forum for both Chelsea and Dexter residents, St. Paul church, 14600 Old US-12, Thursday, June 26 at 7 p.m. The meeting will be held in the lower level of the church. For further information call 763-4427.

Weekly Tuesday Nite Singles Club, dance, 9 p.m. to midnight, Ann Arbor "Y," with live band.

Sylvan Township Board meeting the first Tuesday of the month, at 7 p.m., at Sylvan Township Hall.

Chelsea Home Meal Service delivers one hot meal a day to elderly and disabled living in the Chelsea area. For information call 475-8014 or 475-2923.

AA and Al-Anon meeting, Monday evenings at Chelsea Hospital, 8:30 p.m. Closed meetings.

Senior Class meeting, Monday, July 14 at Glenn Graham, 7 p.m.

Chelsea Community Fair Board meeting, July 10, 8 p.m. at the Fair Service Center.

Fall meeting of the Chelsea Women's Bowling Club will be held Aug. 6 at 7:30 p.m. at Chelsea Lanes.

Lamaze Association of Ann Arbor is now holding classes at the Chelsea Community Hospital. If interested, call 761-4402, or 475-9316.

Friends of McKune Memorial Library. Annual membership drive is in progress. Call 475-8328.

Washtenaw County bookmobile, sponsored by the Washtenaw County Library will be at the North Lake United Methodist church, 1411 North Territorial, every other Wednesday from 4:25 to 5:10 p.m., beginning April 9.

Inquiries regarding the Chelsea blood bank may be directed to Harold Jones in the event that Mrs. Dudley Holmes is unavailable, or to Robert Moyer, American Red Cross in Ann Arbor, 971-5300.

Tours of Chelsea Community Hospital and surgical center are available for small groups. To arrange for tours, call: Neva Jordan, 426-8027, or Dorothy Miller, 475-8020.

Senior Citizen Fun Nite every Friday evening at 7:30.

St. Louis Boy Scout Troop Enjoys First Overnight Camp-out

Boy Scout Troop 451 of the St. Louis school held their first overnight camp-out last Wednesday on the school's wooded grounds near the lake.

Eleven boys, supervised by Bob Burgess, Donald and David Hall, and Jon and Donald Osterle of Troop 475 cooked an evening meal pitched their tents and spent their first night under canvas.

Scoutmaster of Troop 451, Otis Titus said that the boys had a good time, thanks to the Troop 475 who loaned them their camp equipment.

Firemen Also Help Fund Fireworks Display

American Legion Commander Jim Knott, in telling of the success of this year's picnic and ice cream social and fireworks display held on the Chelsea Fairgrounds July 4th, mentioned that the success of the evening was made possible by donations from the community. According to Knott, he was recently informed that the Chelsea Fire Department also donated to the fireworks display.

Telephone Your Club News To 475-1371

DEATHS

Mrs. Thomas Masterson
Former Chelsea Resident
Dies June 30 in Florida

Mrs. Lucile D. Masterson of Melbourne Beach, Fla., formerly of Chelsea, died June 30 at the Brevard Hospital in Florida. She was 77.

Mrs. Masterson was born July 26, 1897 in Syracuse, N.Y. She is survived by her husband Thomas L. Masterson of Melbourne Beach, Fla.; two daughters, Peggy M.K. Dierkes both of Indian Lake, Fla., and a son, Thomas E. M. Wheat of Bloomfield Hills, and 11 grandchildren.

She was a member of Our Lady of Lourdes Catholic Church and the Garden Club By the Sea in Indian Lake.

Funeral services were held July 3 at 10 a.m. at Our Lady of Lourdes Catholic church.

Arrangements made by the Brownlie Funeral Chapel.

BIRTHS

A son, Todd Eric, June 26 at Herrick Hospital in Tecumseh to Mr. and Mrs. Eric Sparks of 4665 Fletcher Rd., Manchester. Maternal grandparents are Mr. and Mrs. Gene Burnett of Chelsea. Paternal grandparents, Mr. and Mrs. Sammy Sparks of Manchester.

A daughter, Lisa Rebecca, June 30, at Foot Hospital, Jackson, to Mr. and Mrs. Robert M. Tefft of 3175 Wolf Lake Rd. Maternal grandparents are Mr. and Mrs. Glen Wiseman of Chelsea. Paternal grandparents Mr. and Mrs. Robert T. Tefft of Ann Arbor.

A daughter, Corinda Joyelle, to Mr. and Mrs. Gary Tuttle, July 5 at U. of M. Women's Hospital. Maternal grandparents are Mr. and Mrs. Roy Clemons. Paternal grandparents are Mr. and Mrs. Ralph Bragg of LaFountain, Ind.

A son, Robert Scott, July 4 at St. Joseph Mercy Hospital, Ann Arbor, to Mr. and Mrs. William Kushmaul. Maternal grandparents are Mr. and Mrs. Harry Kealy. Paternal grandparents are Mr. and Mrs. Robert Kushmaul.

A daughter, Laura Elizabeth, June 29 at St. Joseph Mercy Hospital, Ann Arbor, to Mr. and Mrs. Tony Burnett of Gregory. Maternal grandparents are Mr. and Mrs. Joseph Aspiranti of Gregory. Paternal grandparents are Mrs. Marjorie Fullerton of Jackson and Harry Burnett of Chelsea.

FROZEN SANDWICHES?

Why not make a week's supply of sandwiches for the brown baggers? Freeze, they'll thaw by lunch time. Saves on the early morning rush. Sandwiches will be tasty but not soggy if they're spread with butter all around the bread.



CHELSEA'S TIGERS: Pictured with their assistant coach, Glen Weir (left) and coach Hal Pennington (right) are members of the T-Ball league Tiger team. Sitting on the bench from left to right are Shawn Monaghan, Kurt Roberts, Erik Brown, Dan Goins, Kim Wier and Peter Hanna. Standing from left to right, Kevin Morris, Brett Knickerbocker, Dan Pennington, Rex Bongo and Jayson Pierson.

Cookie Sale Profits Help 75 Girl Scouts Go to Camp

This summer 75 Girl Scouts in this area will go to camp with the help of scholarships provided by profits from the annual Girl Scout Cookie Sale, it was announced today by Mrs. Louis (Jean) Galan of Dexter president of the Huron Valley Girl Scout Council.

In all, \$2,500 will be spent to ensure that girls who need financial help can attend Camp Linden, the 430-acre Girl Scout camp in Livingston county. Each girl will spend two weeks at the camp, learning to swim, sail, and backpack, as well as studying nature and ecology.

In making the announcement, Mrs. Galan said, "Girl Scout camp is a marvelous experience for any girl. And we are so happy that our successful cookie sale made it possible for us to help meet the costs of camping for so many girls this year."

Twenty-six of the campership winners come from Westland-Wayne area, 22 from Ann Arbor, seven from western Washtenaw county, six from eastern Washtenaw county, four from Plymouth-Northville area, and five each from Livingston county and southern Wayne county.

In addition, 30 girls will attend Camp Linden through the Community Camp Placement program supported by Washtenaw United Way. These camperships are underwritten by United Way contributions and by special gifts from community groups.

In 1974, more than 650 girls at-

tended Camp Linden for resident troops with 575 girl members who camped there for shorter periods.

Last year, 79 girls received full or partial Huron Valley camp scholarships at a total cost of \$2,216.

In addition, the Council underwrote all or part of the camp costs of 79 Girl Scouts who applied for aid to the Community Camp Placement Committee. Total cost was \$1,900.

The Huron Valley Girl Scout Council is a Washtenaw United Way agency.

David Heydlauff Earns Degree at Ferris

David G. Heydlauff, son of Mr. and Mrs. Willis Heydlauff, 18309 Cavanaugh Lake Rd., received a Bachelor of Science degree from Ferris State College in Big Rapids this spring.

A surveying major, David is presently employed with the Terra Stout Co. of Traverse City, as a surveyor.

LEGUMES PROVIDE PROTEIN

Dried beans and peas are plentiful right now. These are not vegetables, but rather, they are legumes and thus an excellent source of vegetable protein. Both beans and peas combine well with dairy and meat groups, so they give a good quality protein, especially when used in combination.

Recreation Study Points Out Gaps in Program

A report entitled "Recreational Facilities, Participation and Future Needs in Chelsea, Michigan" was presented at a June 18 meeting of the Chelsea Recreation Council by two graduates of the

geography department at Eastern Michigan University, Chester Panowski and Warren Covert. The pair began working on the report in mid-March in response to concern over needs for recreational facilities and programs for children and adults in Chelsea.

The report, while highly complimentary of the present recreation program, especially of the work of the recreation director, Tom Balistrere, recommended that more attention be directed toward senior citizens and young persons of high school and post high school age. It was further recommended, that because of the rapid growth of the recreation program, the village consider hiring a full-time recreation director.

Other portions of the report were devoted to the possible development of a multipurpose recreational structure. While this topic was discussed, several questions remained unanswered. It was tabled for future consideration.

The report will be used as a resource medium for further planning activities by the Recreation Council. A copy of the report will be given to the McKune Memorial Library for study by anyone interested.

Guest Evangelists Appearing at Assembly of God

Youth will be heard in the persons of Evangelist David and Irene Weiker of Grand Rapids at the First Assembly of God, 14900 Old US-12 East, according to pastor, the Rev. T. B. Thodeson.

The Weikers, who are musical as well as having a message in mission, will be ministering nightly at 7 p.m., July 9, 10, 11 and 13, and Sunday, July 13 at 11 a.m.

As an extra feature, the Adrian Youth Choir from Bethel Assembly of God, Adrian, will visit Chelsea to share their faith with Chelsea folks Saturday, July 12 and present a concert in the evening at 7.

St. Mary Parish Exceeds Goal in Annual Diocese Service Appeal

Lansing—Catholics of St. Mary parish, Chelsea, contributed \$5,453 to the Lansing Diocese's annual Diocesan Service Appeal which this year received \$652,602 to assist more than 26 agencies, programs and services in the 10-county area.

The total amount is an increase over the \$643,143 collected last year and represents 97 percent of the \$675,000 Diocesan goal. Final gifts are expected to increase this amount during the coming months.

St. Mary's parish had a goal of \$5,100. With its pledge of \$5,453 it surpassed that figure by \$353.

Did you ever stop to think how bad the situation would be if everyone agreed with you?

Planning Comm. Conducts Hearing on Ordinance Change

The Village Planning Commission held a public zoning hearing Tuesday evening to amend the zoning ordinance. The amendment, requested more than one year ago, is to allow a group of foster care homes in multiple family residential moderate density districts and high density districts.

Presently a provision for foster care homes in the ordinance does not exist. The Planning Commission will make a recommendation to the Village Council and a public hearing will be held.

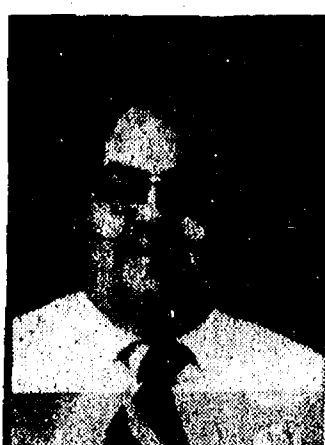
12th ANNUAL PICK-UP SALE



LYLE CHRISWELL



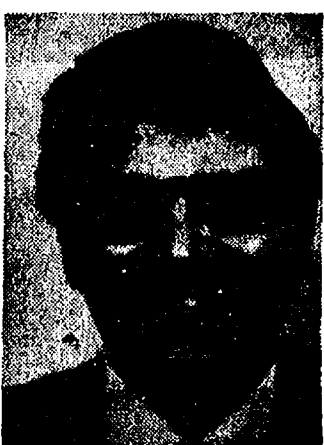
HAPPY FACE



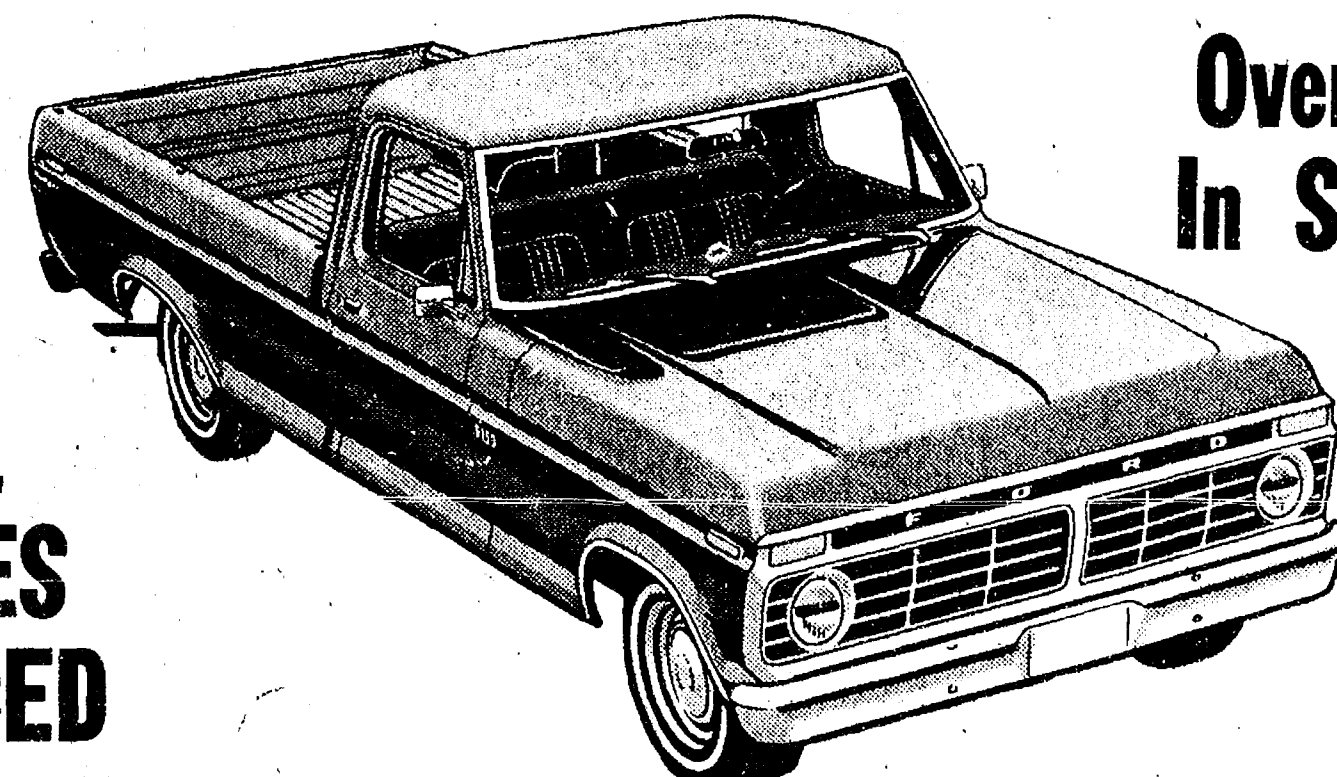
BENNIE HAYES



JOHN POPOVICH



JOCK CRAWFORD



Over 35 In Stock!

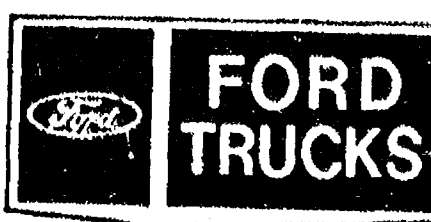
ALL PRICES REDUCED

ONLY \$3039⁰⁰

For a Brand New 1975 Ford 1/2-ton Pick-Up with fresh air heater, gauges, heavy duty rear springs, chrome front bumper, bright metal grille, foam cushion seat, freight and delivery charges. (Does not include Sales Tax and License.)

The Happyface Place® We're in business to make you smile.

PALMER



CHelsea SINCE APRIL 1912 475-1301
Open Monday, Wednesday, Thursday and Friday Till 9:00 p.m.; Saturday Till 4:00 p.m.

It's Overcoat Weather



OLYMPIC OVERCOAT

is an Acrylic Latex Base finish especially formulated to provide a durable flat finish on previously painted surfaces and on textured or smooth primed or unprimed hardboard.

Its features include water clean-up, easy application, excellent durability and outstanding color retention.

White and Colors - Gal. \$10.95

For New Wood Outside Use Famous OLYMPIC STAIN \$9.95 GAL.

you'll find it at

CHELSEA LUMBER

"Where the home begins"

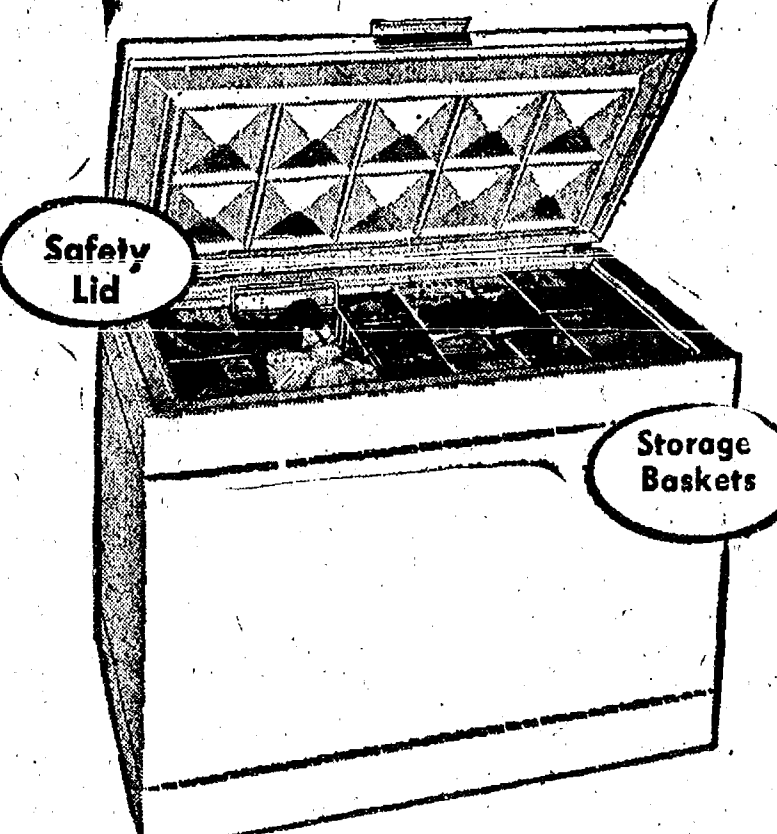
GO

GAMBLES

110 N. Main St. Ph. 475-7472

FREEZER HEADQUARTERS

WHY PAY MORE?



CORONADO 25 Cu. Ft. CHEST FREEZER

Use Our Budget Pay Plan! \$369⁹⁵

Priced to please! Chest freezer maintains balanced cold you select in 25 cu. ft. area, stores up to 675 lbs. of frozen foods. Lift-out baskets. Safety lid stays open by itself, closes tight. An outstanding Coronado value with 4-way warranty!

ALWAYS BETTER BUYS!

LITTLE ROOSTER RESTAURANT

Phone 428-8668 11485 N. Territorial Rd.

THURSDAY, 5 to 9 p.m. - SPAGHETTI DINNER
ALL YOU CAN EAT - \$2.35 per person**FRIDAY, 5 to 9 p.m. - OCEAN PERCH DINNER**
All the Perch You Can Eat - \$2.45 per personIn addition to our regular menu, we are now serving our own
HOME-MADE PIZZAS after 5 p.m.OPEN Tuesday thru Sunday, 11 a.m. to 10 p.m.
Closed Mondays.

Standard Ads Are A Good Shopping Guide.

DISCOUNT!

ALL SCOTT'S PRODUCTS BELOW AUTHORIZED PRICES

SCOTT'S TURF
Builder OUR \$12.95 FREE CUSTOM
Reg. \$16.95 PRICE LANDSCAPE DESIGNS**EVERGREENS**Choose from thousands—Yews, Junipers, Rhododendron,
Concolor Fir, Pines, Spruce and Many More. **\$9.95**
Specially dug for summer planting from**SHADE TREES!**Large selection Crimson King Maples, Ginko, Silver Maple, Norway
Maple, Pin Oak, White Birch, Flowering Crab and Plums, and more.**All Fruit Trees** Just Arrived . . . 1 Thousands
30% OFF! New & Used Railroad Ties**PATIO BLOCKS** 5 color, 8"x16" ONLY 3 for 99c**TOP SOIL-PEAT** Best and most fertile you can buy.
We deliver.OUR MOTTO: "Quality Has No Substitute"
OPEN DAILY 9-8, SUNDAY Noon-5**SLOAN'S Nursery and Garden Centers**1885 Baker Rd., Dexter (1 mile N. of I-94, Dexter Exit)
ALSO: 17184 Schaefer, Detroit (1/2 Block North of 6 Mile)

ATHLETICS sporting green and gold uniforms complete with pants and caps are kneeling from left to right, Brian Farley, Mark Watson, Mike Merkel, David Mayer, Matt Stoll, Mike Feeney, and Steve Rosentree. Standing in the rear row from left to right, Mark Rosentree, Mark Bentley, Rodney Satterthwaite, Bobby Kelly, Joe Merkel, Scott Kelly and Bob England. Coaching the T-Ballers is Chuck Kelly.

Reds Toppled By Tigers in Girls Softball League Action

Holding a 2-0 standing in the Girls Softball League for early season, the Reds lost one game to the Tigers this week, losing their perfect record but still remaining on top of the league with a 3-1 standing. A standing, they share with the Tigers who boosted their former 1-1 standing with a 21-20 win over the Athletics and another 21-11 victory over the Reds.

In other girls softball action, the Twins dumped the Dodgers, 20-8 outstanding player for the Twins was Amanda Schwarze who had four hits for her team during that game. The Reds defeated the Mets, 16-13. Cathy Volta had a home run for the Reds, and Mets

player Lisa Bauer hit a homer for her team, while teammate Lori Miles had three hits.

Candy Schirmacher had three hits to lead the Tigers to their close one-point victory over the Athletics in last Thursday's play. The game was a close one made so by Athletic player Cathy Villeneuve, who had three hits for the team, including a double.

In Tuesday's play, the Mets tumbled the Twins, 6-4. They were led by Lori Miles who had three hits and a triple hit by Becky Dawson.

The Tigers met the Reds, handing them their first loss of the '75 season. The 21-11 victory was helped along by Jackie Lamb who had a home run. Reds player Becky Robards had two hits for her team.

In a game played against the Dodgers, the Athletics took their win, 40-33 thanks to Gayle Beyer who had a grand slam home run.

GIRLS SOFTBALL STANDINGS

	W	L
Tigers	3	1
Reds	3	1
Mets	2	2
Twins	2	2
Athletics	3	3
Dodgers	1	3

Schedule for the coming week is as follows:

TUESDAY, JULY 15Mets vs. Tigers
Twins vs. Athletics
Reds vs. Dodgers**Thursday, July 10**Dodgers vs. Mets
Twins vs. Tigers
Athletics vs. Reds

Games begin at 1 p.m. on the Chelsea High school field.

T-BALL STANDINGS

	W	L
Indians	5	0
Tigers	4	1
Cardinals	3	1
Yankees	2	2
Athletics	1	4
Braves	1	4
Pirates	0	5

LITTLE LEAGUE STANDINGS

	W	L
Yankees	3	0
Giants	3	0
Indians	2	2
Dodgers	2	2
Reds	0	3
Brewers	0	3

JOEY LEAGUE STANDINGS

	W	L
Rademacher	3	0
Stock	3	0
Schmitke	2	1
Bauer	2	2
Fortner	0	3
Koch	0	4

JC Rummage Sale
Reported 'Successful'

Loren Fletcher barked away Saturday afternoon, June 28, at the Chelsea Fairgrounds selling every donated item at the annual Chelsea Jaycee Rummage Sale.

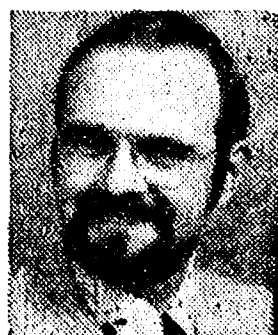
According to Mrs. Robert Jones, "the sale was a success, every thing was sold."

And thanks to community support, those persons who donated rummage items for the sale, and those who bought them, the Jaycees will turn their profits right back into the Chelsea community, bidding a walk-way to South school, dug-outs for the CHS ball diamonds, and many more projects funded by Jaycee dollars and manpower.

As of June 30, 1975, a total of \$239 billion will have been spent by the Federal Government on programs for veterans of all wars.

You and Yours

... the reason we're in business ... your family, your home, your car, boat, recreational vehicles, your business, your financial security. We understand how important all these things are to you. After all ... we have or want the same things. For the facts and a fair price.

**DAVE ROWE**107 1/2 S. Main
Chelsea, Mich.
Ph. 475-8065**FARM BUREAU**
INSURANCE
GROUPFarm Bureau Mutual • Farm Bureau Life
Community Service Insurance • Community Service Accidents

CHELSEA, MICHIGAN, THURSDAY, JULY 10, 1975

Walt's Barber Shop Unbeaten After 5 Starts in Slow Pitch Race

The first week in July was an exciting one for the Class A Slow-Pitch Program as the league leaders clashed in several exciting battles. The main story involves the Ann Arbor Eagles and IPSCO, with the Eagles gaining ground and IPSCO plagued by the home run ball.

In the first game of the week, played Tuesday, the Eagles defeated IPSCO in the last of the seventh with a two-run home run. This game was followed by Mark IV Lounge's first win of the year over Ganjai Oil.

The last game of the night saw the two leading teams meet, as Walt's Barber Shop defeated McCalla's Feeds, in a surprisingly easy manner, 10-1.

Wednesday the Eagles continued their comeback as they defeated a tough Rulea Farm team in a close game. On Thursday, Village Motors defeated Rulea Farm, using only nine players as Rulea Farm gave Village Motors time to collect a team, only to go down to defeat.

In the second game the Eagles finished a perfect week as they defeated Ganjai Oil to move into second place in the league. The week ended with more trouble for IPSCO as they were again victimized by a home run in the seventh inning to lose their second game of the week. This time it was Walt's Barber Shop in the first half of the seventh when Dan Wilson hit a three-run home run to put Walt's ahead.

Walt's Barber Shop, McCalla's Feeds, and IPSCO will play in the State Class A Slow-Pitch Tournament on the week-end of the 18th, 19th, and 20th, of July. Ann Arbor Eagles will take part in the State Class B Slow-Pitch tournament on the following week-end. These games will all be played in Ann Arbor or Ypsilanti. Class B games were not played this week.

AMERICAN LEAGUE STANDINGS**Class A Slow-Pitch Standings**

	W	L
Walt's Barber Shop	5	0
Ann Arbor Eagles	5	2
McCalla's Feeds	3	2
Village Motors	3	2
IPSCO	3	3
Rulea Farm	2	4
Mark IV Lounge	1	3
Ganjai Oil Co.	0	6

NATIONAL LEAGUE STANDINGS**Class B Slow-Pitch Standings**

	W	L
Bollinger Sanitation	5	1
Norm's Body Shop	5	2
Federal Screw Works	4	2
3-D Sales	3	3
Wolverine Bar	1	5
Fortune Industries	0	5

Mark Watson Earns Degree at Ball State

Among 1,233 undergraduates who completed work toward degrees from Ball State University, located in Muncie, Ind. is Mark S. Watson, son of Mr. and Mrs. J. G. Watson, 42 Butternut Lane. Mark majored in social studies for which he received a Bachelor of Science degree.

Degrees were conferred at the University's spring commencement by its president, Dr. John J. Pruiss.

**PRIZEWINNER:** A three-pound ten-ounce catfish was caught by 2 1/2-year-old Gwen Zeller, daughter of Mr. and Mrs. Gary Zeller of 3451 Waters Rd. at the Piqua Fish and Game Contest held in Piqua, O. Gwen holds the prize-winning catch, the largest fish at the annual event.

COUPON

U. S. NO. 1 CALIFORNIA
POTATOES
8 lbs. 99c

COUPON

CHARCOAL, 10 lbs. 95c

Coupons good only Thurs., Fri., Sat., July 10-11-12, 1975

Larry's Roadside Market

Halfway Between Chelsea and Manchester on M-52
1/4 mile south of Gross Lake Lake Rd. Phone 475-1610

Read The Standard Ads for Regular Bargains!

RICK'S MARKET

Just North of Chelsea on M-52 "The Friendly Store" Phone 475-2898

13 1/2-OZ. CRTN.
PRINGLES 3 pk. \$1.2925-LB. BAG
PURINA PUPPY CHOW \$6.79KRAFT SALAD DRESSING
MIRACLE WHIP 48-Oz. Jar \$1.59ALL BRANDS AND SIZES
CIGARETTES Crtn. \$3.79JARSBURG
SWISS CHEESE Lb. \$1.99CARNATION INSTANT NON-FAT
DRY MILK 14-Oz. Box \$3.09KELLOGG'S
RICE KRISPIES 13-Oz. Box 76c**The Freshest Baked Goods in Chelsea**

WITH THE HOMEMADE TASTE OF QUALITY

★ ROLLS OF ALL KINDS ★ DONUTS, TOO
★ AND COFFEE CAKES FOR YOU

... m-m-m-m good and fresh!

Upper Classic

SALE!
Regular \$12 to \$15
BAN-LON
KNIT SHIRTS
By Puritan
\$8.99

Hurry in and take advantage of these exceptional savings for a limited time only!

Short sleeve Brookview
4-Button Placket
or
Brookfair Crew Neck

Strieter's Men's Wear
"The Place to go for Brands You Know"

Ads
Taken
Till 1 p.m.
Tuesday

Advertise the Action Way! The Want Ad Way!

Just
Phone
475-1371

WANT ADS

The Chelsea Standard

WANT AD RATES
or less, each insertion. Count each insertion. "Blind" ads or box number ads, \$10 extra per insertion. Figure at 10 words. For more than 25 words add 3 cents per word for each word over 25. Same as cash in advance, with 25 cents bookkeeping charge if not paid before 1 p.m. Tuesday preceding publication. Pay in advance, send cash or stamps and save 25 cents.
DISPLAY WANT ADS—Rate, \$1.40 per column inch, single column with only 6-point and 10-point light type only. No borders or headline type. Minimum 1 inch.
CARDS OF THANKS OR MEMORIALS—Single paragraph style, \$1.50 per insertion for 50 words or less; 3 cents per word beyond 50 words.
COPY DEADLINE—1 p.m. Tuesday week of publication.

BEL-MAR ANTIQUES—Specializing in glass—1800's to Depression Era. For app't-directions call 1-498-2788 after 6:00 p.m. on week-days.

PROFESSIONAL AUCTIONEER—ING SERVICES—Specializing in estates, liquidations, antique household sales, etc. Auction school graduate. Sell the auction way. No sale too small. Lorn Fletcher, Ph. (517) 851-8830 Stockbridge.

WANTED—Job to care for elderly person, gentleman or lady, in their home. Day or night. Single woman. Ph. 475-1144.

Special of the Week

1973 OLDS 98 LS
4-dr. hardtop (air cond.)
\$3595

USED CARS

- 1972 BUICK Electra 225 2-dr. hardtop, air cond. \$3495
- 1972 CHEVROLET Impala Custom 2-dr. hardtop, air cond., 32,000 miles \$3295
- 1972 DODGE Charger 2-dr. hardtop, air cond. \$2295
- 1972 FORD Pinto Runabout, automatic \$1595
- 1971 BUICK LeSabre Custom 4-dr. hardtop, air cond. \$1895
- 1971 FORD LTD 2-dr. hardtop, air cond. \$1295
- 1970 BUICK Skylark 2-dr. hardtop, 46,000 miles \$1695
- 1970 BUICK Electra 225 4-dr. hardtop, air cond. \$1395
- 1970 CHEVROLET Impala 2-dr. hardtop \$1395
- 1970 BUICK LeSabre 4-dr. hardtop \$1095
- 1970 BUICK LeSabre 4-dr. hardtop, air cond. \$895
- 1969 BUICK LeSabre 4-dr. sedan, air cond., 37,000 miles \$1395
- 1969 BUICK LeSabre 4-dr. sedan, air cond. \$895
- 1969 MERCURY station wagon \$95
- 1968 PLYMOUTH Fury 2-dr. \$95
- 1968 BUICK LeSabre 2-dr. hardtop \$195

SPRAGUE
Buick-Olds-Opel, Inc.
Sat., 8:00-1:00
1500 S. Main St., Chelsea

ICE CREAM Social July 20, from 2 to 6 p.m., 3860 Waltrous Rd. Annual rummage sale, prizes. Proceeds to Spaulding for Children.

WANT ADS

PATCHING and PLASTERING
Call 475-7489.

Lawn & Garden FERTILIZER

50-lb. bag \$6.00

McCALLA FEED SERVICE

CLOGGED SEWER

Reynolds Sewer Service

We Clean Sewers Without Digging
Drains Cleaned Electrically

FREE ESTIMATES

2-YEAR GUARANTEE

Phone Ann Arbor NO 2-5277

"Sewer Cleaning Is Our Business—Not a Side Line"

THORNTON

WEEK-END RETREAT—Or comfortable year-round starter home. 2 bedrooms. Attractive setting on channel at Half Moon Lake. \$25,900.

CONVENIENT—3-bedroom brick ranch at the edge of town. Large modern kitchen with lots of working space. Nice covered patio in rear. Attached garage and full basement. Close to middle school.

16 ACRES of good farm land; barn and workshop. Plus pleasant old Dutch Colonial home with 4 bedrooms, in good condition. Chelsea schools.

CENTENNIAL HOME—Outstanding old farm home on 10 acres with large, just outside of Chelsea. Unique potential for restoration to stately graciousness. 11-foot ceilings, some beautiful woodwork, lots of living space and many, many bedrooms.

4 ACRES—Fantastic newer home with slate entryway, family room and rec room (each with fireplace), central vacuum, 5 bedrooms, din., 1st floor laundry, attached garage.

DEXTER SCHOOLS—Country location on 4 acres. Beautiful landscaped, many plantings. Attractive 5-year-old home with large living room, 3 bedrooms, full basement. \$40's.

VACANT LAND

3 ACRES—Several choice sites just outside of Chelsea.

8 ACRES in Grass Lake township. Priced to sell at \$9,000.

10 ACRES—Wooded parcel in Chelsea schools.

ROBERT H. THORNTON JR. PC REALTOR

- CHELSEA: Mark McKernan 475-8628, Dolly Alber 475-2801, Chuck Walters 475-2808, Helen Lancaster 475-1198, Bob Thornton 475-8857
- RUBBERMAID Party Plan needs demonstrators, full or part-time. No delivering, no packing, no collecting. Excellent commissions. Call Pat Leeke (517) 536-8254. Also booking parties.
- FOR SALE—Magnavox console TV, with record player, AM-FM radio. \$80. Ph. 475-2760.

WANT ADS

LEONARD REITH

Master Plumber

Licensed Electrician

Hot Water Heat

18238 N. Territorial Rd.

Chelsea, Mich. 48118

Phone: 475-2044

All Insurance Needs

In the convenience of your own home — or mine

N. H. Miles, Allstate

Call GR 5-8334 after 5 p.m.

FRISINGER

NEW LISTING—3,000 sq. ft. block building with small house on approx. 3 acres. Commercial zoning, blacktop road, between Chelsea and Manchester. Many possibilities.

NEW LISTING—Beautiful split level home, 3 bedrooms, dining area, family room, fireplace, 2-car garage, access to Big Wolf Lake. \$43,900. Extra lot available at \$4,000.

NEW LISTING—2 bedrooms, newly remodeled interior, patio, 180' x 180' lot, country living, close to Chelsea. \$32,900.

NEW LISTING—4-bedroom custom built bi-level, dining room, family room, fireplace, full basement, 1 1/2 baths, 2 1/2-car attached garage, 1.5 acres. Dexter schools.

NEW LISTING—Brick and frame 3-bedroom ranch with walk-out lower level, dining room, fireplace, first-floor laundry, 10 acres. Dexter schools.

NEW LISTING—Village of Chelsea, 3-bedroom ranch, dining ell, family room, fireplace, 2-car attached garage, quiet street.

NEW LISTING—Village of Chelsea, 2-unit income, excellent location. \$33,500.

FRISINGER REALTORS

Chelsea 475-8681

- Evenings: Hope Bushnell 475-7180, Paul Frisinger 475-2821, Burke Fitzgerald 475-8603, Herman Koenig 475-2813, Toby Peterson 475-2718, Bob Koch 428-4754, George Frisinger 475-2903

EXPERIENCED MAN for dairy farm. Good wages, modern house, many fringes, steady employment. Please call 313-475-2170.

ECONOMY CARPET CLEANING—Safe dry method. Lowest rates in town. Discount for senior citizens. Call Matt Merkel at 475-2739 after 6 p.m.

BEANS FOR SALE—Just south of I-94, corner of M-52 and McKernan Dr., Chelsea. \$4

FOR SALE—1968 Chevelle. Automatic power steering, and brakes. AM-FM, runs good. Ph. 426-8401 after 6 p.m.



"What's the antique I got in the Standard Want Ads doing there?"

WANT ADS

FOR RENT—Fair Service Center for meetings, parties, wedding receptions, etc. Weekdays or week-ends. Contact John Wellnitz, phone 475-1518.

Headquarters for

RED WING WORK SHOES

Foster's Men's Wear

FOR RENT—Street level office downtown location, adjacent to parking lot, consisting of four rooms. Furnishings available. Aug. 1 occupancy. Ph. 428-8333.

PROFESSIONAL EFFICIENT SERVICE

There is a good market for homes in the Chelsea and Dexter Area. —If you would like the top price call.

BURKE FITZGERALD

Representing

Frisinger Realtors

Office 475-8681, Res. 478-6603

Real Estate One Of Washtenaw

1196 M-52

Chelsea, Mich. 48118

We Make Things Simpler For You!

NEW DUPLEX—\$200 rental per side, low for this area. Backs up to nice flowing creek. North of Chelsea, maintenance free. Owner wants offers and will accept terms.

STARTER HOME—3-bedroom home on Cavanaugh Lake. Also, good resort year-round home. Chelsea schools. \$17,500.

TIERED OF CITY LIVING—3-bedroom on 3 acres, east of Chelsea, near x-way interchange. Chelsea schools. \$32,500.

HILLTOP SETTING—Fantastic 3-bedroom ranch, walk-out basement, attached garage, fireplace. 5 rolling acres, partly wooded. Near I-94, Chelsea schools. \$55,500.

CHELSEA NEAR I-94—Unusually nice, wooded, rolling 10 acres. Excellent land contract terms. \$17,900. Must be seen.

DAYS - 475-8693

- Evenings—Bob Myrnel 428-8988, Jean Tschirhart 426-2731, Aileen Zsoryuk 428-7824, Ted Picklesimer 475-8174, Joe O'Connor 994-1223, Steve Flint 475-1423, Al Kleis 475-7322

HELP WANTED—Young man to wash cars and trailers at Lloyd Bridges Chevrolet. Call Mr. Bridges at 475-1347.

SALE

OLYMPIC STAIN

up to \$4.00 OFF
REGULAR PRICE

D. E. HOEY and SONS

3515 Broad St., Dexter
Ph. 426-8119

WANT ADS

FOR SALE—1974 Richardson mobile home, 12'x30', 2-bedroom, furnished. Many extras: washer, dryer, skirting, etc. Set up in Chelsea Trl. Crt. \$4,300. Phone (517) 592-6194 or (517) 423-3612.

REAL ESTATE

3-BEDROOM HOME—Large kitchen, formal dining room, 2-car garage plus small income or in-law unit with separate facilities, on 2 beautiful acres adjoining state land. Chelsea schools. \$49,000.

JUST LISTED—2-bedroom living quarters, 20'x24' barn on 10 beautiful rolling acres, blacktop road. Stockbridge schools. \$18,500!

SUMMER FUN ahead—at beautiful Clear Lake on a small lot with good sunny beach for swimming and boat launching. Shade trees for relaxing and picnics. Low price. Call for details.

NEW LISTING—5-bedroom older home, needs renovation; plus a large mobile home in good condition on 3 acres. Stockbridge schools. All for \$24,900.

ALMOST SECLUDED on 3 acres, 3-bedroom ranch home, 2 full baths. Close to I-94. Grass Lake schools. \$33,900.

2,048 SQ. FT. beautifully renovated brick home with charm of old exterior, convenience of new interior. 30-ft. living room with one mantle fireplace, formal dining room, 3 huge bedrooms, 2 full bathrooms, full basement. On one acre in country. In Chelsea schools. \$44,500.

BUILDING SITES—One acre, 1 1/2 acres, 2 acres, 5 acres, 10 acres, all in Chelsea school district; 14 acres, heavily wooded, Dexter schools.

THE HISTORIC Old Town Hall building in Waterloo Village, 20'x36', two stories. Solid structure. \$5,000.

YARD WORK, odd jobs, almost anything. Reliable 20-yr. old. Reasonable rates. Call Steve at 475-8220.

J. R. CARRUTHERS LICENSED RESIDENTIAL BUILDER

CUSTOM HOMES

ADDITIONS/FIREPLACES

PATIO

ROOFING/SIDING/REPAIRS

475-7234

CHELSEA

801f

MERKEL

Home Furnishings

USED SOFA, fair condition. \$39.95

USED SOFA and chair. \$29.95

USED UPHOLSTERED chair, good condition. \$19.95

SLIGHTLY USED Serta Hide-A-Bed. Price new \$499.50; sale price \$199.50.

SWEET CORN—Will be ready July 16. Sugar Loaf Lake Farm, Ph. 475-7295.



MAUSOLEUMS ★ MONUMENTS

BRONZE TABLETS ★ MARKERS

BECKER MEMORIALS

6033 Jackson Road
ANN ARBOR, MICHIGAN

WANT ADS

GAR-NETT'S Flower & Gift Shop

Your Friendly Florist

112 E. Middle St., Chelsea

PHONE 475-1400

Funeral Flowers

Cut Flowers (arranged or boxed)

Potted Flowering Plants

Green Plants - Corsages

WE DELIVER

291f

Pickup Caps & Covers

For all makes and models. Standard and custom-designed. From \$147.00. Free brochure.

PIONEER COACH MANUFACTURING CO.

3496 Pontiac Trail

Ann Arbor, 688-6785

421f

Fireplace Builder

Field stone mason, block and brick mason, tuck pointing.

FREE ESTIMATES

Call 475-8025 after 3 p.m.

401f

Patrick Grammatico

401f

GEORGE W. SWEENEY

HEATING

Licensed Contractor
Furnaces, air conditioning, and sheet metal work.

Phone 475-1867

201f

CAR RENTAL by the day, week-end, week or month. Full insurance coverage, low rates. Call Lyle Christie at Palmer Motor Sales, 475-1301.

Part Time Typists - Clerical

PERMANENT part-time opening in sales department of Dexter firm. Job offers a variety of duties with hours flexible. 50 wpm typing required. Please call Mrs. Krost at 426-4681 for more information.

1973 GREMLIN—Radio, 3-speed, stick, chrome rims, new tires plus snow tires. 21,000 miles, excellent condition. \$2,000. Ph. 475-9081.

YARD WORK, odd jobs, almost anything. Reliable 20-yr. old. Reasonable rates. Call Steve at 475-8220.

J. R. CARRUTHERS LICENSED RESIDENTIAL BUILDER

CUSTOM HOMES

ADDITIONS/FIREPLACES

PATIO

ROOFING/SIDING/REPAIRS

475-7234

CHELSEA

801f

WANT ADS

Sand Gravel

KLINK EXCAVATING

Bulldozer - Backhoe
Road Work - Basements
Trucking - Crane Work
Top Soil - Demolition
Drainfield - Septic Tank
Trenching, 3' up

Industrial, Residential, Commercial
CALL 475-7631

131f

WANTED—Part-time employment for middle-aged single woman, varied experience, public contact, could be of some assistance to doctor. Good references. Chelsea or near-by town, nominal remuneration. Write Box JV3, Chelsea Standard, Chelsea, Michigan. x4

401f

KNAPP SHOES

For Cushion Comfort

Robert Robbins

475-7282

401f

Quality Used Cars

'74 PINTO Runabout, 6-cyl., auto., radials, 9,800 miles. \$2695

'73 PONTIAC Catalina 2-dr. hardtop, V-8, auto., p.s., low mileage and clean. \$2395

'73 FORD 34-top pick-up, \$60, 4-speed, step bumper, good rubber. \$2295

'72 DODGE B-300 Maxivan, 318, 3-speed, AM radio. \$2395

'71 DODGE B-100 Tradesman van, 109 wheelbase, 225, 3-speed \$1795

'71 CHEVY El Camino, 307 V-8, auto., p.s., cover. \$1995

'70 PLYMOUTH Fury III 4-dr., 318, auto., p.s. \$595

'70 OLDS Cutlass S 4-dr. V-8, auto., p.s., b.b., air cond. \$1495

12-ft. MIDWEST flatbed truck body \$225

9 1/2-ft. FLATBED truck body. \$225

'72 DODGE Coronet Custom 6-pass. wagon, 318, auto., p.s. \$1195

'68 PLYMOUTH Satellite 2-dr. hardtop, 318, auto., p.s. \$695

'67 CHEVY 2-dr., V-8, auto., p.s. \$495

401f

Village Motor Sales, Inc.

WANT ADS

- YOUNG -
We list and sell lake, country and town properties. Eugene Young, Real Estate & Builders, 875-3732, 1196 Dexter-Pinckney Rd., Pinckney 48169. x341f

Custom Built Homes
Oh! We Remodel too
U-can count on us
N-q Job Too Small
T-rim Inside & Out
R-ough-in Only If
Y-ou Want to Finish
S-iding Aluminum, 5" Gutters
I-mmediate Attention
D-ALE COOK & CO.
E-estimates, Free

BUILDERS

Please Call
475-8863

DALE COOK

General Carpentry
Also Repairs
Chelsea Ph. 475-9209
x471f

TRENCHING
Water line or electric
Phone 475-7978
511f

Farm Items For Sale

NEW SUPER MIX steer feed,
\$7.45 cwt.
NEW LOW PRICES on stock salt
and water softener pearls.
VERNAL ALFALFA
and clover seed.
Cole's Elev. Co.
Gregory, Phone (313) 498-2735
x6

**Lawn & Garden
FERTILIZER**
50-lb. bag \$6.00

**McCALLA
FEED SERVICE**
461f

EVINGER REAL ESTATE, Alpine
St., Dexter. Phone 426-5518. x181f
APT. FOR RENT in Chelsea.
Couple, 1 child, no pets. Ph. 475-
1513. x4

New Quad Level
3,000 sq. ft. of living space on two
acres, 5 bedrooms. Many extras.
One mile west of Dexter on black-
top.

Building Sites
One acre parcels - sandy soil -
recreation area.
1 1/2 and 15 acre parcels, one mile
west of Dexter.
CALL 990-0597 or 426-4022
Wentworth Realty
REALTORS
x21f

A1 USED CARS

AT OUR TRIANGLE LOT
M-52 and Old Manchester Road

74 PINTO WAGON	\$2895
Very clean	
74 PINTO 3-DR.	\$2695
Automatic	
74 GRAN TORINO	\$3395
4-Dr., Factor air	
71 TORINO 2-DR.	\$1495
V-8 automatic	
71 FORD WAGON	\$1695
Factory air	
71 MUSTANG	\$1495
Mustang	
70 TORINO 2-DR.	\$1195
One owner	
70 MUSTANG 2-DR.	\$1095
Real clean	
70 FORD 4-DR.	\$395

The Happyface Place
We're in business
to make you smile

PALMER
Since April 1912

Wm. Thurn, Jr. TH 9:00 p.m.
Sat. TH 4:00 p.m.
Sun. TH 10:00 a.m.

FORD
Since April 1912

WANT ADS

FOR REAL DOLLAR SAVINGS
be sure and see us before you
buy any new or used car. **Palmer**
Motor Sales, Inc. Your Ford Deal-
er for over 60 years. 24f

FOR SALE - Indian cents, post-
cards, books, foreign coins.
Australian opals, and other arti-
cles. Lawrence E. Guinan, 2571
Sugar Loaf Lake. Call 475-1371.
-37f

WEDDING STATIONERY - Pro-
spective brides are invited to see
our complete line of invitations.
The Chelsea Standard, Ph. 475-1371.
-37f

**Complete
Body Repair
Service**

Bumping - Painting
Windshield and Side Glass
Replacement
Free Pick-up & Delivery
Open Monday Until 9
CONTACT DON KNOLL
FOR FREE ESTIMATE

**Village
Motor Sales, Inc.**
IMPERIAL - CHRYSLER
DODGE - PLYMOUTH
Phone 475-9661

1185 Manchester Rd., Chelsea
Hours: 8 a.m. to 6 p.m.
Tues. thru Fri. Until 9 Monday.
9 a.m. to 1 p.m. Saturday
x401f

GUTTERS

SEAMLESS aluminum eaves-
troughs installed. White and
brown. Call Wilson Metal Shop,
Manchester, 428-8468. x81f

**McCulloch
Portable Generators
Chain Saws**

WE SELL SERVICE,
SHARPEN AND TRADE.

Chelsea Hardware
211f

**Now Taking Orders
for
FRESH FROZEN
FRUIT**

Cleaned and ready to eat. Cher-
ries (sweet and red sour), blue-
berries, red and black raspberries,
blackberries, apples, peaches, ap-
ricots, gooseberries, rhubarb and
pineapple. Please have order in by
July 18. Phone (313) 428-7600.

**Manchester
Locker Plant**
Manchester, Mich. x5

ALUMINUM SIDING, trim and
gutters. High quality work at
reasonable prices. Licensed and
insured. Dennis Ferrell, 428-4068.
x7

BOB'S LOCK & KEY
Complete Locksmithing Service
Commercial, Residential,
Automotive
Luggage locks repaired.
475-9071
-411f

WANT ADS

**NOW
Full Time
Complete
Body Shop
Service**

Stop in For An Estimate
PALMER FORD
222 S. Main St.
475-1301
271f

PIANO TUNING, Chelsea and area.
Facilities for reconditioning and
rebuilding. Used piano sales; re-
conditioned grands and verticals.
E. Ecklund, 426-4429. x501f

SEE US for transit mixed con-
crete. Klumpp Bros. Gravel Co.
Phone Chelsea 475-2530, 4920 Love-
land Rd., Grass Lake, Mich. x401f

TRAVEL TRAILERS - 13-ft. and
up; 10-55 ft. trailers. John R.
Jones Trailer Sales, Gregory, Mich.
Phone 498-3555. x43f

ELECTRICAL WIRING of all
types. New and rewiring. Ph.
428-4555. x201f

FOR RENT - American Legion
Hall, 450. Call 475-1824. x01f

**WILLIAMSON HEATING and Cool-
ing**, sheet metal work. Licensed
and insured. Steele & Son, (313)
475-2022 or (517) 596-2951. x21f

**Automotive
Rust Proofing
Cars and Trucks**

**Village
Motor Sales, Inc.**
IMPERIAL - CHRYSLER
DODGE - PLYMOUTH
Phone 475-9661

1185 Manchester Rd., Chelsea
Hours: 8 a.m. to 6 p.m.
Tues. thru Fri. Until 9 Monday.
9 a.m. to 1 p.m. Saturday
211f

REDUCE excess fluids with Fluid-
ex-Jose weight by Dex-A-Diet
capsules; \$1.98 at Chelsea Phar-
macy. -4

CHELSEA - 3-bedroom Ranch, 2
baths; sunken living room, family
room with bar; located on Howard
Rd. \$49,900. For an appointment
call 475-7448. x11f

WATERLOO-CHELSEA AREA -
Only 3 mobile home lots left.
Paved roads, terms. Ph. 228-6837.
-3

**Lakes Dug
Bulldozing**
- FREE ESTIMATES -
Phone 475-8121
or
475-7959
After 5 p.m. 15

FOR RENT - 2-bedroom apart-
ment. Downtown Dexter. No
children, no pets. Deposit re-
quired. 426-2588. x21f

AUCTION SALE - Sat. July 19, 11
a.m., many antiques, furniture,
appliances, recreational items,
dishes, baled hay, and misc. items.
North Lake United Methodist
Church Building Fund, 14111 N.
Territorial Rd. North Lake, Price
Brothers Auctioneers. x5

FOR SALE - Kenmore automatic
washer and dryer, \$95. Chevrolet
truck transmission, 4-speed, \$75.
Ph. 426-3252. -5

GARAGE SALE - Clothing, odds
and ends, free things, and more.
All week-end. 1008 Fahrner Rd.,
Sylvan Center. Ph. 475-1542. -4

LOST - Large brown brief case ap-
prox. July 1. Chelsea. Reward for
return. Ph. 475-1321. -4

FLEA MARKET every Saturday.
North Lake Methodist church,
10:5 p.m. Rummage sale, 11th-12th,
auction 10th. x4

RED RASPBERRIES - Call 475-7118
persistently. x4

YARD SALE - Lots of records,
paperbacks, plants, old picture
frames, old Popular Mechanics and
National Geographic, baseball
cards, and misc. 402 W. Middle,
July 10 and 11. -4

GARAGE SALE - Household goods,
clothing, and hand-made quilt.
Thursday thru Saturday, 10 to 7.
1985 W. Old US-12. -4

FOR SALE - Girl's Schwinn 5-speed
bike, with light, generator, \$70
or best offer. Ph. 475-8865. -4

MONTMORENCY CHERRIES -
10955 Heiber Rd. Ph. 428-8222. -5

FOR SALE - One acre with older
house trailer, 60'x12', needs work,
car port, 6 miles west of Stock-
bridge. \$6,800 and \$1,500 down. Ph.
(517) 465-3108. -4

USHERS WANTED for "Oklaha-
ma" at Chelsea High school, July
31, Aug. 1-2. High school age and
up. Contact Jackie Schiller, 475-
8540 anytime after 4 p.m. -4

FOR RENT - New 2-bedroom apt.,
\$200 per month, in Stockbridge.
Ph. 475-1743. -4

GARAGE SALE - July 12-13, 10 to
6, 201 W. Duncan, Manchester.
Antiques, collectibles and junk. -4

NEW LARGE AMANA air condi-
tioner, \$275; antique sideboard,
\$145; motorless rubber-tired lawn-
mower, \$10. Ph. 475-8882. -8

WANT ADS

SEAMLESS ALUMINUM eaves-
troughs, roofing, siding, and
carpentry work of all kinds. Ex-
perienced installers. All work
guaranteed. For free estimate,
call R. D. Kleinschmidt Co., 428-
8836. x311f

KETO USED CARS
8020 GRAND - DEXTER
426-4535
CARS BOUGHT AND SOLD
x381f

**A fine selection of
New and Used Cars**

**Harper Pontiac
Sales & Service**
475-1306
Evenings, 475-1608

MUNITH AUCTION - 100 Main St.,
Munith, Mich. Auction every
Sunday, 6 p.m. Danny Fleming,
auctioneer. x121f

STOCKBRIDGE, 13 acres, commer-
cial, on M-52. (517) 851-8144.
351f

D&G Allen Excavating
Septic Tanks and Drainfields
Back Hoe and Dozing
Sand, Gravel and Topsoil Hauled
Phone (517) 851-8386
or (517) 851-8278
431f

BRICK MASON - Brick work,
block work, fireplaces, chimney
repairs, homes and additions. Ph.
475-2584. x441f

A & K MOWER SERVICE - All
types of small motor repair.
Chain saws, rider mowers, rotary
mowers. Free pick-up and de-
livery. Ph. 475-2923. -20

FOR SALE - Singer Futura I sew-
ing machine. One-half year old,
hardly used. Call 428-8118 eve-
nings. -4

HI NEIGHBOR! Tried Blue Lustre
for cleaning carpets? It's super!
Rent electric shampooer, \$1. Chelsea
Hardware. -4

FOR SALE - Porta-Crib and net
bassinett with top. Both like new
with mattress, bumper pad and
sheets. Call after 6 p.m., 475-1271.
511f

FOR SALE - 518 Congdon, Fri-
day and Saturday, July 11 and 12
beginning at 11 a.m. Friday, 9
a.m. Saturday. -3

FOR SALE - Kenmore automatic
washer and dryer, \$95. Chevrolet
truck transmission, 4-speed, \$75.
Ph. 426-3252. -5

GARAGE SALE - Clothing, odds
and ends, free things, and more.
All week-end. 1008 Fahrner Rd.,
Sylvan Center. Ph. 475-1542. -4

LOST - Large brown brief case ap-
prox. July 1. Chelsea. Reward for
return. Ph. 475-1321. -4

FLEA MARKET every Saturday.
North Lake Methodist church,
10:5 p.m. Rummage sale, 11th-12th,
auction 10th. x4

RED RASPBERRIES - Call 475-7118
persistently. x4

YARD SALE - Lots of records,
paperbacks, plants, old picture
frames, old Popular Mechanics and
National Geographic, baseball
cards, and misc. 402 W. Middle,
July 10 and 11. -4

GARAGE SALE - Household goods,
clothing, and hand-made quilt.
Thursday thru Saturday, 10 to 7.
1985 W. Old US-12. -4

FOR SALE - Girl's Schwinn 5-speed
bike, with light, generator, \$70
or best offer. Ph. 475-8865. -4

MONTMORENCY CHERRIES -
10955 Heiber Rd. Ph. 428-8222. -5

FOR SALE - One acre with older
house trailer, 60'x12', needs work,
car port, 6 miles west of Stock-
bridge. \$6,800 and \$1,500 down. Ph.
(517) 465-3108. -4

USHERS WANTED for "Oklaha-
ma" at Chelsea High school, July
31, Aug. 1-2. High school age and
up. Contact Jackie Schiller, 475-
8540 anytime after 4 p.m. -4

FOR RENT - New 2-bedroom apt.,
\$200 per month, in Stockbridge.
Ph. 475-1743. -4

GARAGE SALE - July 12-13, 10 to
6, 201 W. Duncan, Manchester.
Antiques, collectibles and junk. -4

NEW LARGE AMANA air condi-
tioner, \$275; antique sideboard,
\$145; motorless rubber-tired lawn-
mower, \$10. Ph. 475-8882. -8

FOR RENT - In Dexter - Unfurnish-
ed, 4-room, second floor apart-
ment. Stove, refrigerator and heat
provided. Garage available. Phone
475-1639. -4

FOR RENT - Large one bedroom
country apt. 3 miles from town.
\$150 per month, plus utilities. Re-
ferences required. Write Box JU-10,
in care of Chelsea Standard. -5

FOR SALE - Mr. and Mrs. chair
set, La-Z-Boy rocker, dining room
light fixture, trailer hitch. 475-7324. -4

HELP WANTED - Janitress-Jan-
itor. Part-time, nights. Phone (1)
892-3300 between 9 and 4 Mon. thru
Friday. x4

GARAGE SALE - Five families,
Friday and Saturday, 10 to 5. 6821
Dexter-Ann Arbor Rd., Dexter. x4

FOR SALE - Pony cart, \$45; pony
harness, \$25. Ph. 665-3070. -x4

FOR SALE - 3 registered quarter
horses 9 yr. old mare, 6 yr. old
mare, yearling filly. Gentle. 663-
3117. 8500 Jennings Rd., Ann Arbor.
-x4

WANT ADS

NEED A ROOF? Call Toth Build-
ing & Remodeling, (313) 498-
2178. x41f

CAR & TRUCK LEASING. For
details, see Lyle Christwell at
Palmer Motor Sales, 475-1301. x91f

BUILDERS - House and barn roof-
ing, all types of roof repair,
aluminum storm windows and
doors, aluminum siding and gut-
ters, awnings, porch enclosures,
garage and room additions, ce-
ment work. Call Joe Hayes for
free estimates, Manchester 428-
8820. x161f

MANAGERS NEEDED to replace
managers who won't work. Send
summary of interest and experi-
ence. A & N Associates, P.O. Box
41, Chelsea. x461f

FOR RENT - 2-bedroom apart-
ment. Downtown Dexter. No
children, no pets. Call 682-9722,
persistently. x471f

LECITHIN Kelp! B6! Cider Vine-
gar! Now all four in one cap-
sule. Ask for VB6 or VB6+ double
strength. Chelsea Pharmacy. -8

WANTED - Lawns to mow. Will
furnish lawn mower. Call Dan
and John Rowe. Ph. 475-8055, 521f

FOR RENT - 1-bedroom luxury
apartment, downtown Stock-
bridge. \$175 month plus utilities.
Phone: (517) 851-7175 or (513) 495-
2508. x11f

FOR SALE - Starcraft tent trailer,
six sleeping spots, closet, and
ice box. Ph. 475-8922. x4

FOR SALE - 1974 Yamaha 125 MX
trail machine, \$380 or best offer.
Call after 5 p.m. 475-2923. -x4

FOR SALE - '68 Torino, 289, auto-
matic. \$350. Ph. 475-1138. x31f

FOR SALE - Used pontoon boat.
Best offer. Ph. 475-2674. -4

FOR SALE - Hay conditioner,
good. Also, 6-foot combine, ex-
cellent. Ph. 475-8759 after 6 p.m. -5

FOR SALE - Sewing machine with
dark maple cabinet. For more
information phone 475-9354 before
4 p.m. -4

APT. IN DUPLEX, North Lake
area, 2-bedroom, fully carpeted,
full basement. No children or
pets. Ph. 426-3737. x521f

YARD SALE - Firewood, clothes,
some furniture plus misc. items.
Fri. 8 a.m., July 11-12, 9 to 9. 14550
Jerusalem Rd., close to M-52.
-x4

3-WHEEL BICYCLE, 20". Will dis-
assemble for easy storage. 1 year
old. \$100. Also, old wardrobe cup-
board with nice detail, \$55. Phone
475-1873. -x4

YARD SALE Saturday, 10 to 5,
Ann Arbor St., Dexter. Furniture,
household items, clothing, miscel-
laneous. -x4

RUMMAGE SALE - Fri. and Sat.,
July 11-12, 9 a.m. to 4 p.m. North
Lake Methodist Church. Bake sale
Saturday only. -x4

BABYSITTER NEEDED for
school-age child 7 a.m. to 4:30
p.m. May live in. Ph. 475-8801 after
5 p.m. -x4

GARAGE SALE - Saturday, July 12,
9 to 4, 118 W. Duncan St., Man-
chester. Bikes, clothes, sewing ma-
chine, misc. -x4

FOR SALE - Baler twine, \$24.95 per
bale, Carl Heller. Ph. 475-8304. -x5

FOR SALE - 1970 Mercury. Very
good condition. \$700. Ph. 426-4078
after 4 p.m. -x4

FOR SALE - Late cabbage plants.
418 Wilkinson. Ph. 475-7483. -4

FOR SALE - Ward's refrigerator
22. Frostless, ice maker, \$275.
Sears gas range \$150. Both avocado.
475-7550. -x4

FOR RENT - Trailer space for rent
in Chelsea. Village water, sewer
and refuse pick-up. Convenient lo-
cation. Ph. 1-474-8552. x5

FOR SALE - Quad stereo system,
AM-FM, tape deck, tape player,
speakers, \$175. Call 475-1080 after
5 p.m. -x5

FOR SALE - Standing hay, first
cutting. Name your price. Ph.
475-1571. Comb. timothy, brome and
alfalfa. -x4

FOR SALE - Red raspberries. You
pick. Mon., Wed., Fri., 9 a.m. to
12 and 4 p.m. to 7 p.m. Elders. 8115
N. Territorial. Ph. 426-3259. x4

VIEWERS WANTED for the 700
Club Monday thru Friday, 9:30
p.m., Channel 20. Jesus saves. x4

FOR SALE - Heavy-duty utility
trailer, 4'x8' bed, 15" wheels,
\$100. Ph. 475-8754. -x4

YOUNG COUPLE with 1 school-
age child want to rent 2-bedroom
house or apartment in Dexter-Chel-
sea area. References available.
Phone eve. 878-6361. -x7

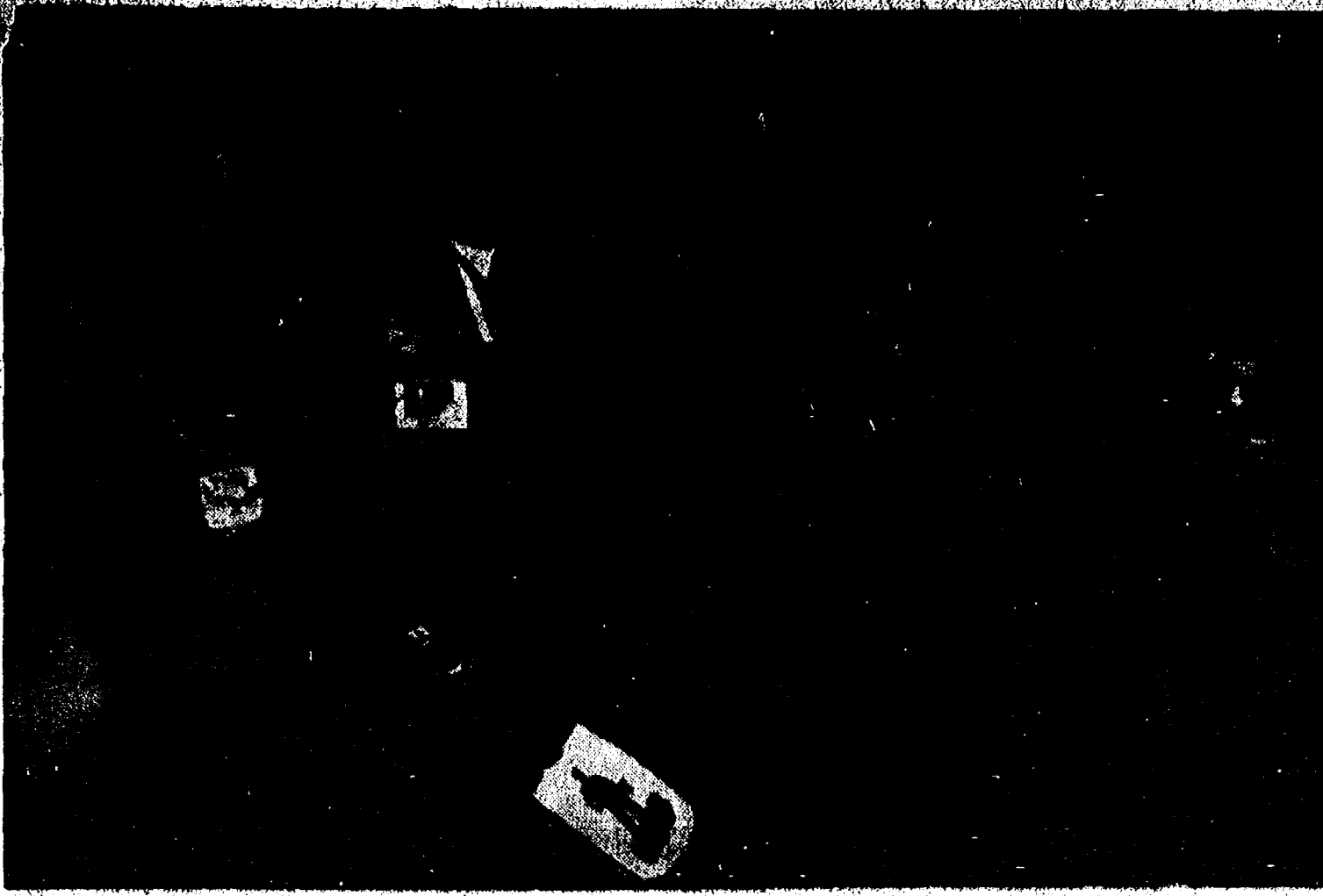
FOR REMODELING, roofing, pole
barns, call Dan Hughes, 994-
9250. x421f

WANTED - Interior-exterior paint-
ing, \$5.50 per hr. or by job.
Guarantee all work. Ph. 971-5751.
x501f

WANT TO BUY your next cutting
of hay. Contract now. (313) 439-
2802. x481f

Card of Thanks

CARD OF THANKS
The family of Catherine R. Haf-
ner wishes to express their heart-
felt thanks to all their relatives,
friends and neighbors for all the
remembrances through Masses,
memorials, beautiful flowers,
plants, cards, calls and food sent
in.



RECEIVES SILVER BEAVER AWARD: Scoutmaster Jack Brigham, second from left, of Boy Scout Troop 477, receives the Silver Beaver Award for outstanding service to scouting. The award is the highest given by the National Boy Scout Council. Sharing in the honors are Troop 477 Assistant Scoutmaster John Gillespie, left, Dave Knox, second from right, and Roger Noyce.

Jack Brigham Receives Coveted Scouting Silver Beaver Award

Jack Brigham, scoutmaster of Dexter Boy Scout Troop 477, was honored for his many years of service to scouting when he received the coveted Silver Beaver award, the highest honor given by the national Boy Scout Council. The award was presented to him at the annual district dinner in Dundee on June 24.

Brigham began his scouting career as an assistant cubmaster in 1957 when his oldest son went into cub scouting. He later served as cubmaster and spent almost six years in cubbing as two more sons became scouts.

In 1963 he was an assistant scoutmaster of Troop 428 and in 1967 accepted his present job as scoutmaster of Troop 477.

He continues in scouting even though his sons have long since graduated from Boy Scouts. Brigham has been successful in organizing a very active troop with four adult leaders active at all troop functions.

Each summer since 1969, Troop 477 has raised funds to support a very ambitious scout travel program. The troop has visited Sleeping Bear Sand Dunes, Valley Forge, Pa., Gettysburg, Pa., Cumberland Gap, Ky., Washington D.C., Williamsburg, Va., Norfolk, Va., Cedar Point and has taken a Canadian canoe trip.

This summer's trip in August is to Northern Michigan. More than 150 boys have enjoyed these fun and educational trips.

The troop also enjoys a very

active program of summer camp, hikes, and weekend camping. The scouts also take an active part in all local, district and council activities.

Brigham has also served as District Training Chairman for the Council. Other community groups which he actively supports are the Dexter Area Historical Society and Friends of the Dexter Library. He is a member of Webster United Church of Christ.

He was also honored in 1975 with the Iroquois District Distinguished Service to Scouting award.

Almost 100 million Americans, nearly half the U. S. population, are potentially eligible for Veterans Administration benefits.

Heartworms Threaten Pets

East Lansing—Though sometimes fatal in advanced stages, heartworm disease in dogs is easy to treat if detected early and even easier to prevent.

The disease is transmitted to dogs by mosquito bites and has been a major problem in Michigan for several years. Dogs of all breeds are susceptible.

The preventive program is 100 percent effective if followed correctly.

"We are now recommending such a program for puppies. It consists of a tablet or liquid given daily in the food from the beginning of the mosquito season until late fall," say Dr. Patricia O'Handley and Dr. George Eyster, Michigan State University veterinary medicine specialists.

Older dogs should have a blood test before taking the protective medication. If the test is positive, or if they have had a cough that has persisted over a period of time, x-ray and other lab tests are recommended.

"Animals with heartworm are treated with four injections of arsenic over a two-day period. Arsenic is a compound that can be fatal and the dosage is selected that is safe for the dog, but fatal to the heartworm," they say.

The dog should be under the care of a veterinarian for these injections. Six weeks after treatment another medicine is used to kill the migrating form of the heartworm. Then preventive medicine is given daily.

"Only occasionally is the disease so severe that surgery or further medication is needed," they say.

Because the minute parasites that heartworms produce may live in the blood stream for three or more years, a single infected dog may be a constant source of infection to all dogs in the community during mosquito season.

Heartworms do the most damage in the adult stage. Females may grow to 10 to 14 inches in length and males half that size. The adult worms clog the heart chambers and major blood vessels and migrate to the lungs.

Though there have been reports of heartworms found in other animals, it is common only in dogs and is not transmitted to humans.

Standard Want Ads Get Results!

BULLOCK GARAGE BUILDERS

ONE OF THE WORLD'S LARGEST GARAGE BUILDERS

PRIMED SIDING

SHOP US FIRST OR SHOP US LAST BUT GET OUR PRICES BEFORE YOU BUY

LICENSED - BONDED AND INSURED

We Comply With All Local Building Codes



WE CHALLENGE ANY BUILDER TO COMPARE PRICE AND QUALITY

BULLOCKS WILL BEAT ANY WRITTEN ESTIMATE

— COUPON SPECIAL —
24 x 22 DELUXE 2½ CARGARAGE

Call Us For An Appointment and

\$2,695 complete
ON YOUR LEVEL LOT

TAKE A RIDE and SEE OUR DISPLAY

STANDARD 24 x 22 GARAGE —————→ **\$2,595**

**BRING THIS COUPON WITH YOU
OVER 7,000 GARAGES BUILT IN 1974**

JACKSON OFFICE
CALL 787-7770
2388 WILDWOOD

**FREE ESTIMATES - CALL
ANYTIME - HOME HOOKUPS**

double double your money

with compound interest

the one
sure way
to build a
fortune

One of the most important, but overlooked, features of savings, is the magical effect of compound interest. If money is deposited

and the interest it earns never withdrawn, the money grows at an amazing rate. Money in most Ann Arbor Federal Savings certificates doubles every 10 years.

Thus, if a person 40 years old with \$25,000 (in savings, coins, cash value insurance, etc.) puts it into a certificate account at Ann Arbor Federal Savings it will grow to \$50,000 by age 50. By age 60 it will have grown to \$100,000 without adding a penny of his paycheck.

For the person in his mid-fifties, with retirement coming

up in ten years, compounding has even greater significance. Say he has actual assets of \$100,000. If he converts these into cash, he can have \$200,000 in ten years and realize an interest income for life of \$10,000 to \$15,000 thereafter.

But what about the person starting out, the twenty five year old. By putting \$50 a month in a 5½% passbook savings account each month and leaving the interest to accumulate and compound, he will have \$21,190 by age 45. Then if he transfers the money to a certificate account

(and never adds another penny) the money will grow to \$87,380 by age 65.

On the other hand if one continues to add to his savings account regularly, it is well within the realm of possibility to accumulate \$300,000 or \$400,000 or more.

At Ann Arbor Federal Savings your dollars are not subject to market fluctuations, so you are sure when you reach the age at which you want to start using some of your money or earnings it will be there.

the magic of compounding

Deposit	... in 10 years you'll have	... in 20 years you'll have	... in 30 years you'll have
\$ 5,000	\$ 10,511.74	\$ 22,099.34	\$ 46,460.51
\$ 10,000	\$ 21,023.48	\$ 44,198.68	\$ 92,921.02
\$ 25,000	\$ 52,558.70	\$ 110,496.70	\$ 232,302.55
\$ 50,000	\$ 105,117.40	\$ 220,993.40	\$ 464,605.10
\$100,000	\$210,234.80	\$441,986.80	\$929,210.20

Above figures based on an annual interest rate of 7½% compounded quarterly, available in amounts of \$1000 or more, 48 month term. Federal regulations require a substantial interest penalty for early withdrawals.

ANN ARBOR FEDERAL SAVINGS

9 offices: ANN ARBOR, CHELSEA, DEXTER, MANCHESTER, YPSILANTI, BRIGHTON

Founded 1890

MEMBER FSIC
Accounts Insured to \$40,000



THE PIRATES: T-Ballers learning the game of baseball are pictured with their coach Dick Lapanowski. Kneeling from left to right, Jeff Roe, Craig Lapanowski, Billy Ball, Kelly Fletcher, Tony Rush, David Dressehouse, Chris Herter and Kevin Koch. Standing, Rich Boham, David Barels, Chuck Bollinger, Brent Bauer, Brett Lapanowski, Danny Degener and Kelly Roe. Not present for the photo, Greg Markle and assistant coach Jerry Kraus.



THE BRAVES and their coach, John Baker, took time out Tuesday evening for a photo. Standing from left to right are Shanga Parker, Jeff Morgan, Paul Bunton, Phil Sweet, Matt Grau, Garland Deyoe and Mark Bentley. Kneeling, David Cox, Richard Conner, Scott Mills, Dave Steinhauer, Chris Tarasow, Richie Proctor and Chris Baker.

District Court Proceedings

Week of July 13
 Billy Wild pled guilty to charges of speeding. Fines and costs, \$37.
 Edwin Herring pled guilty to charges of failing to stop within a safe distance. Fines and costs, \$21.
 Carl E. Brosamer pled guilty to charges of speeding. Fines and costs, \$21.
 Carol Snyder was found guilty of failing to yield the right of way. Fines and costs, \$37.
 Edwin Hally pled guilty to charges of passing over a yellow line. Fines and costs, \$37.
 Harold R. Ruht pled guilty to riding a motorcycle without a helmet. Fines and costs, \$16.
 Ronald Purdy pled guilty to charges of speeding. Fines and costs, \$37.
 Larry Stanley pled guilty to charges of trespassing. Fines and costs, \$37.
 Larry Stanley pled guilty to charges of trespassing. Fines and costs, \$25.
 Edward Dellmater pled guilty to the possession of open intoxicants in a motor vehicle. Fines and costs, \$25.
 David Duke pled guilty to the possession of open intoxicants in a motor vehicle. Fines and costs, \$25.
 Edwin Hartman pled guilty to charges of unsafe positioning of passengers causing vision obstruction. Fines and costs, \$37.
 John Putney pled guilty to charges of twice violating a license restriction. He was sentenced to three days on the Probation Works Program and fined \$50 for each violation.
 Chester Maynard pled guilty to charges of driving with a suspended license. Fines and costs, \$75 plus ten days in jail or 30 days.
 Denise Adrien pled guilty to charges of allowing an unlicensed person to drive. Fines and costs, \$75 and three months probation.
 Robert Bidski pled guilty to charges of failing to stop within a safe distance. Fines and costs, \$21.
 George Penta pled guilty to the possession of open intoxicants in a closed area. Fines and costs, \$25.
 James Kumble pled guilty to the possession of alcohol in a closed area. Fines and costs, \$25.
 Byron Woods pled guilty to the possession of alcohol in a closed area. Fines and costs, \$25.
 Jack C. Roberts pled guilty to the possession of alcohol in a closed area. Fines and costs, \$25.
 Louell Roehm was sentenced to 18 months probation and fined \$250 on charges of operating a slaughterhouse without a permit.
 Charles Burrows was sentenced to pay fines and costs of \$150 and ordered to attend the Alcohol Safety Action Program on charges of impaired driving.
 Scott Alenda pled guilty to the possession of alcohol in a closed area. Fines and costs, \$25.
 Brian K. Foster pled guilty to charges of speeding. Fines and costs, \$21.
 Jeffrey Franklin pled guilty to the possession of alcohol in a closed area. Fines and costs, \$25.
 Ronald Stafford pled guilty to the possession of alcohol in a closed area. Fines and costs, \$25.
 Ronald Kosmalksi pled guilty to the possession of alcohol in a closed area. Fines and costs, \$25.
 Dennis Weronka pled guilty to the possession of alcohol in a closed area. Fines and costs, \$25.
 Mary Milligan pled guilty to charges of having a dog at large. Fines and costs, \$20.
 Paul Richards pled guilty to charges of being a minor in possession. Fines and costs, \$25.
 Henry Ortrbring was sentenced to one year probation, ordered to attend the Alcohol Safety Action Program and to pay fines of \$350 on charges of driving while under the influence.
 A. I. Doan pled guilty to charges of being drunk and disorderly. Fines and costs, \$50.
 James Froehlich pled guilty to charges of being drunk and disorderly. Fines and costs, \$50.
 Laurence Tardiff pled guilty to the possession of alcohol in a restricted area. Fines and costs, \$25.
 Bleachers, electric scoreboards, lights and fencing for the athletic field, library equipment, shelters for Carr Park are a few improvements made possible by the big broil.

Manchester Chicken Broil Slated Next Thursday

Circle the date, Thursday, July 17, for the 22nd Manchester Chicken Broil—the granddaddy of them all! The annual event, largest of its kind in the midwest, draws thousands to the community of 1,700. Visitors from most of the states and many from abroad will

be served a chicken dinner by the 550 men and boys on the Athletic Field from 4 p.m. to 8 p.m. where work crews are prepared to serve 10,000.

Optimists and Jaycees sponsor the event to raise money for youth projects. General chairman, Gene Bentschneider, says four charcoal pits, each 100 ft. long, will broil more than 3,000 halves at a time. Chefs will baste the chicken halves with butter as they broil over hot coals. Robert Ross, publicity chairman, heralds the event:

Dr. Howard Zindell, head of the poultry department at Michigan State will personally supervise as he did at the first broil. Now four tons of charcoal are used. More than a ton of cabbage will be mixed with gallons of dressing for the cole slaw. A truck load of potato chips, a half-ton of red radishes, 1,000 dozen rolls and butter, and gallons of hot coffee and milk are ordered for the big dinner.

Washtenaw County's Sheriff's Department will have mounted officers directing traffic to free parking areas. Loud-speakers announce visitors. No long lines accumulate at the take-out gate. Visitors may eat at tables on the grounds or take the dinners boxed. Three slow pitch softball games are scheduled. Shelter is available if it rains.

Profits will be used to further develop five-acre Kirk Park; construct play areas, and work on the pond at the park.

Bleachers, electric scoreboards, lights and fencing for the athletic field, library equipment, shelters for Carr Park are a few improvements made possible by the big broil.

FISH FRY COMPLETE DINNER

Our own beer batter perch, fries, cole slaw, roll and butter, \$1.75. Take-outs 10c extra.

EVERY FRIDAY
5 to 9 p.m.
Bring Your Family!

CHELSEA
PUB

CALL OR STOP IN CHELSEA GLASS WORKS

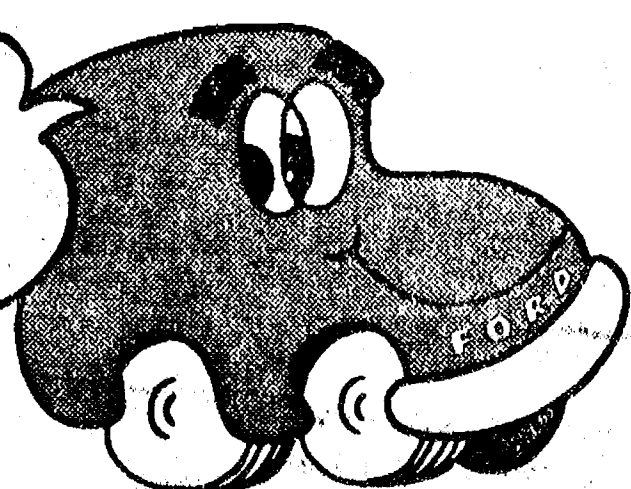
WORKMANSHIP AND MATERIALS FULLY GUARANTEED.
Open Daily 8 a.m. to 5 p.m.; Sat., 8 a.m. to 1 p.m.
140 W. Middle, Chelsea. Phone (313) 475-8667

WE REPAIR AND REPLACE:

- ★ STORE FRONTS
- ★ FURNITURE TOPS
- ★ SHOWER DOORS
- ★ THERMOPANES
- ★ AUTO GLASS - Including Windshields
- ★ MIRRORS
- ★ PATIO DOORS
- ★ TUB ENCLOSURES

Free Pick-up and delivery on auto work.
Storm Door & Window Reglazing & Screens
 COMMERCIAL BUILDINGS OR RESIDENTIAL
PROMPT SERVICE REASONABLE PRICES

Come in and show us your registration — get a free BIG MAC®, regular fries and a regular drink.



Only 2 coupons per family. Offer expires Aug. 15, 1975. Not transferable for cash or another product.

Bring your car registration to Palmer — get a free meal.

PALMER

Open Mon., Wed., Thurs., Fri. Till 9 p.m.
Saturday Till 4 p.m.



Mobil-Toons

By GLENN



"Well, so long ... for another month."

We are always glad to see you! Big car or compact.

GLENN'S MOBIL SERVICE

1622 M-52 & I-94
CHELSEA, MICHIGAN
Phone 475-1767
GLENN HEIM PROP.

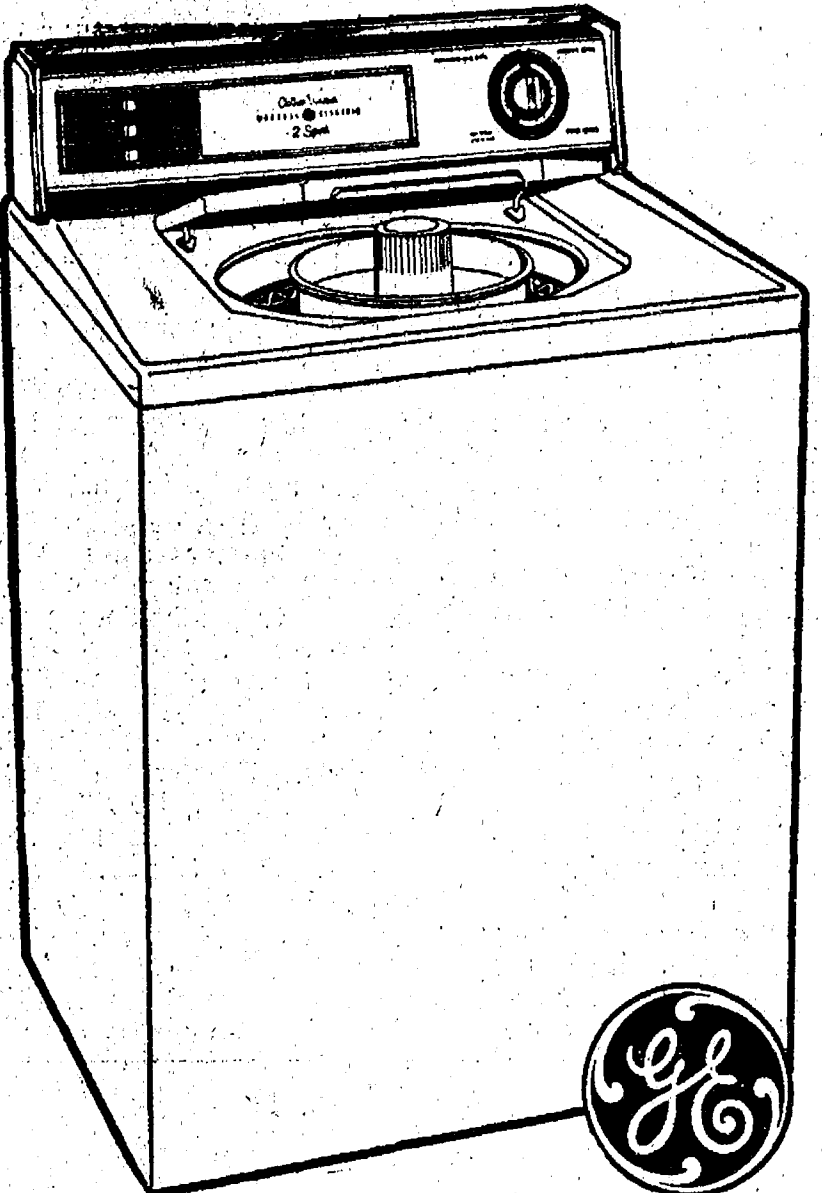
HEYDLAUFF'S THE GREAT ANNUAL CONVOY SALE



30" Range with Infinite Heat Controls
Your Best Value in Automatic Cooking

\$259⁹⁵

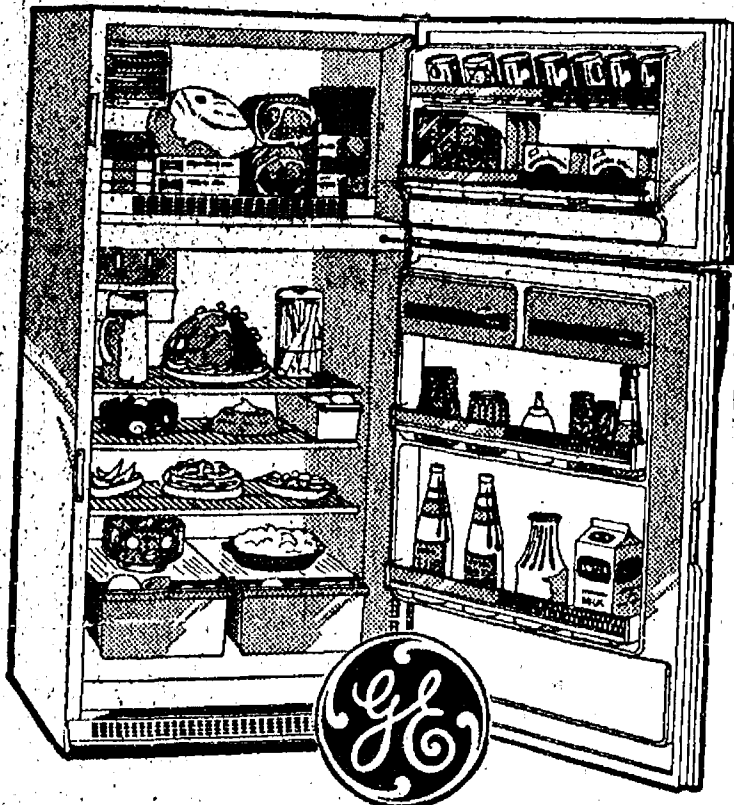
This General Electric range features Calrod® surface units with infinite heat controls—lets you select "just the right" temperature every time. Large size oven with exterior light switch and picture window—check cooking progress without opening the oven door. Equipped with automatic oven timer, clock and minute timer.



FILTER-FLO WASHER \$249⁹⁵

With two wash spin speeds

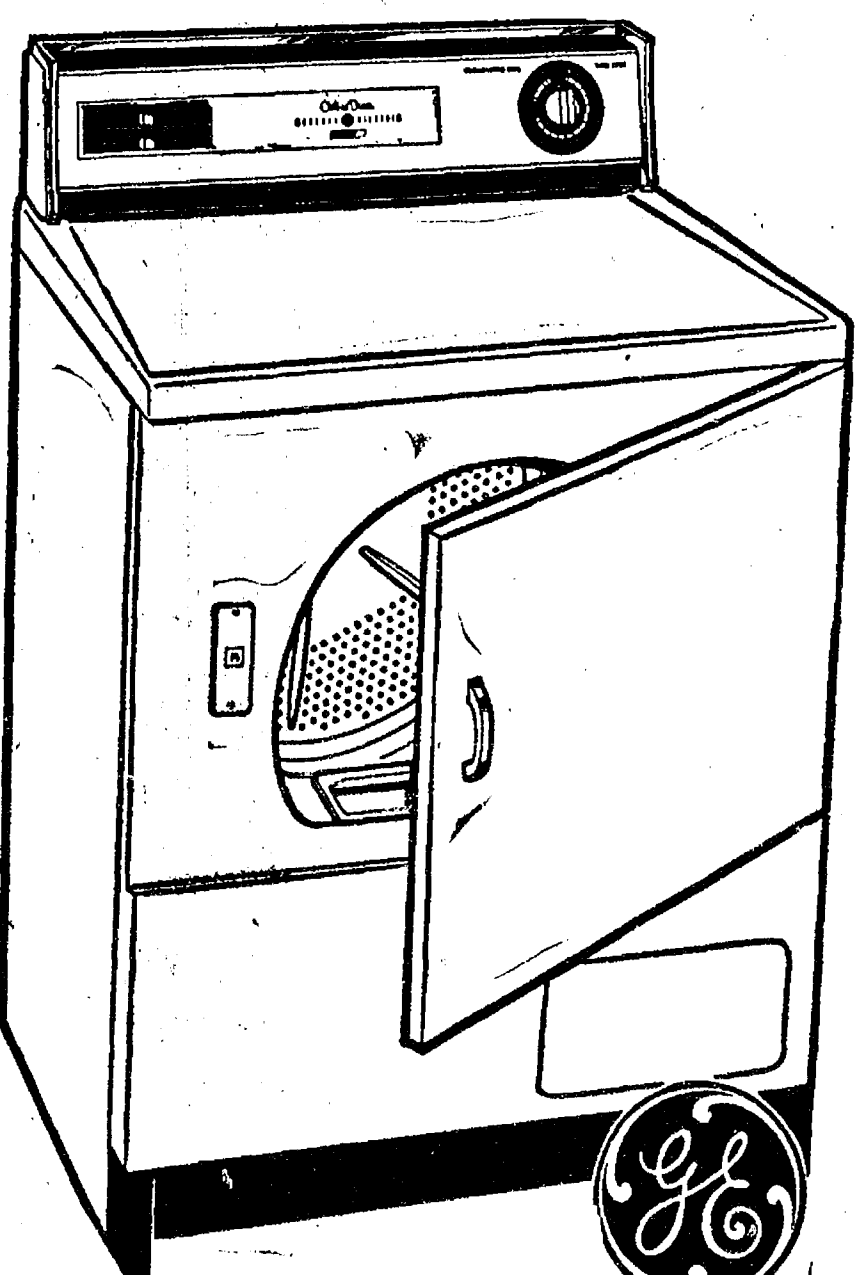
- ★ Filter-Flo Washing System
- ★ Two Speeds
- ★ Three Cycles
- ★ Two Water Levels
- ★ Soak Cycle
- ★ Extra Wash
- ★ Three Wash/Two Rinse Temperatures
- ★ Cold Water Wash and Rinse
- ★ Permanent Press Cycle with Cool-down
- ★ Porcelain Enameled Top, Lid, Tub and Basket
- ★ Unbalanced Load Control



Big Freezer Section No Defrosting ever!

- Two Ice 'n Easy trays store up out of the way in Ice Service compartments
- Power Saver switch can help you reduce power consumption and cost of operation
- Four cabinet shelves
- Twin vegetable bins
- Removable bin holds up to 18 eggs
- Deluxe dairy compartments
- Coil-free back for neat, flush fit
- Separate temperature controls

\$399⁹⁵



GE GAS-DRYER

AIR CONDITIONERS For Any Need WHY SWELTER?

- ★ Timed Dry Cycle
- ★ Permanent Press Cycle with Cool-down
- ★ Fluff Setting (Extended Time)
- ★ Three Temperature Settings
- ★ Separate Start Switch
- ★ Convenient Lint Trap
- ★ Porcelain Enameled Top and Clothes Drum

\$179⁹⁵

HEYDLAUFF'S

113 N. MAIN ST., CHELSEA

PHONE 475-1221



Polly's

MASTER
MARKETS

1101 M52
CHELSEA

201 PARK
VANDERCOOK LK.

1621
Spring Arbor Rd.
JACKSON

960
N. WEST AVE.
JACKSON

115
W. PROSPECT ST.
JACKSON

1809
E. MICH. AVE.
JACKSON

get to know us...

WE CAN HELP YOU SAVE ON YOUR FOOD BILL!

OPEN . 8 A.M. TO 10 P.M.
DAILY:

OPEN 9 A.M. TO 6 P.M.
SUNDAY:

- ★ **QUALITY PRODUCE**
- ★ **QUALITY MEAT**
- ★ **COLD BEER & WINE**
- ★ **LOTTERY TICKETS**
- ★ **SIDES OF BEEF**
- ★ **FRUIT BASKETS**
- ★ **DRY CLEANING**
- ★ **PHOTO PROCESSING**
- ★ **VARIETY AT LOW PRICES**



Polly's

MASTER MARKETS



Polly's MASTER MARKETS

1101 M52
CHELSEA

960
N. WEST AVE.
JACKSON

201 PARK
VANDERCOOK LK.

115
W. PROSPECT ST.
JACKSON

1621
Spring Arbor Rd.
JACKSON

1809
E. MICH. AVE.
JACKSON

Come to Pollys for

Open Daily 8 a.m. 'til 10 p.m. . . . Sunday 9 a.m. 'til 6 p.m.

We reserve the right to limit quantities . . . No sales to Dealers

We've Just Purchased a Carload of Polly's Pride Quality Beef
at Below Market Prices and We're Passing the Savings on to You!

30¢ Lb. OFF BEEF SALE!

Polly's Pride Quality Beef

**CHUCK
ROAST**

Blade
Cut Lb.

85¢

Polly's Pride Quality Beef

**CHUCK
STEAK**

Lb.

\$1.05

Polly's Pride Quality Beef

**ROUND
STEAK**

Lb.

\$1.65

Polly's Pride Quality Beef

**SIRLOIN
STEAK**

Lb.

\$1.89

Polly's Pride Quality Beef Chuck

ENGLISH ROAST

Lb.

\$1.15

Polly's Pride Quality Beef Chuck

ARM ROAST

Lb.

\$1.25

Polly's Pride Quality Beef Chuck

BONELESS ROAST

Lb.

\$1.35

Polly's Pride Quality Beef

STEW MEAT

Lb.

\$1.29

Polly's Pride Quality Beef

PORTERHOUSE

Lb.

\$2.49

Polly's Pride Quality Beef

T-BONE STEAK

Lb.

\$2.39

Polly's Pride Quality Beef

CUBE STEAK

Lb.

\$1.59

Polly's Pride Quality Beef N.Y.

STRIP STEAK

Lb.

\$2.79

Polly's Pride Quality Steak

DELMONICOS

Lb.

\$2.79

Polly's Pride Quality Beef

TOP ROUND

Lb.

\$1.99

Polly's Pride Quality Beef

SIRLOIN TIP

Lb.

\$1.99

Polly's Pride Quality Beef Boneless

CHUCK STEAK

Lb.

\$1.39

Polly's Pride Quality Beef Rolled

**RUMP
ROAST**

Lb.

\$1.59

Polly's Pride Quality Beef

**RIB
STEAKS**

Lb.

\$1.89

Polly's Pride Quality Beef

**RIB
ROAST**

Lb.

\$1.39

Polly's Pride Quality Beef

**GROUND
CHUCK**

Lb.

99¢

SAVE 50¢

FRANKS

89¢

SAVE 40¢

BACON

\$1.19

SAVE 14¢ LB.

Farmer Peets Reg.

HAM

whole

95¢

shank-half

Lb. **99¢**

butt-half

Lb. **\$1.09**

center slice

Lb. **\$1.39**

SAVE 40¢ LB.

Swiss Eversweet

TROUT

\$1.59

SAVE 40¢

Swiss Eversweet

BACON

\$1.59

SAVE 20¢ LB.

Turkey Hindquarters

Lb.

39¢

SAVE \$1.00 SWIFT PREMIUM

Canned Ham

5-Lb.

\$6.49

SAVE 30¢ ARMOUR

Grill Hot Dogs

1-Lb.

99¢

SAVE 50¢ ARMOUR

Pullman Ham

3-Lb. can

\$4.99

Deli Specials

Eckrich Bulk Smoked or

POLISH SAUSAGE

Lb. **\$1.39**

Farmer Peets Bulk

BOILED HAM

Lb. **\$1.89**

Herrud Bulk

GERMAN WIENERS

Lb. **\$1.29**

SAVE 20¢ FARMER PEETS

Personal Bacon

12-OZ.

\$1.19

SAVE 20¢ FARMER PEETS

V.C. Sausage

Lb.

89¢

SAVE 50¢ W/In-Store Coupon . . . FARMER PEETS

Hot Dogs

5-Lb. Box

\$4.45

FROZEN

Breaded Cod

5-Lb. Box

\$2.95

SAV-A-LOT DRUGS

- SERVICE BUILT OUR BUSINESS
- YOUR PROBLEMS ARE OURS
- FAIR PRICES
- FRIENDLY HELP TO AID & ASSIST YOU

We Welcome your comparison . . . our prices are the lowest in town

24 HOURS A DAY

Now Available!

ICY HOT for Arthritis

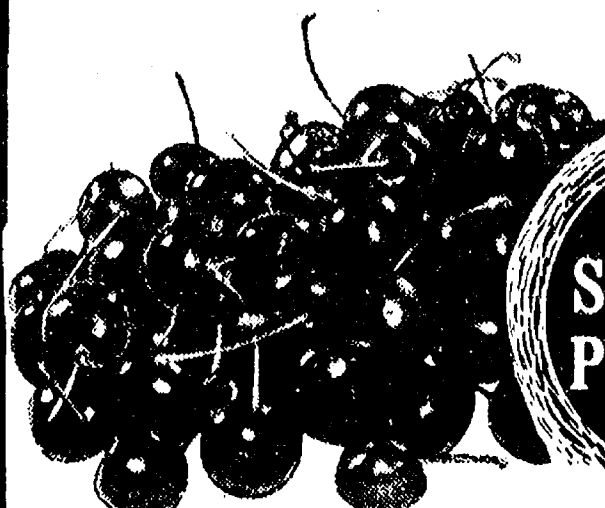
Save 51¢ 3 1/2-oz. **\$2.99**

W/IN-STORE COUPON
Antacid Gum CHOOZ

Save 5¢ 16¢ 10-CT. PKG. **\$1.99**

W/IN-STORE COUPON
Approved MULTIPLE VITAMINS W/Iron

Save 70¢ 250-CT. **\$2.99**



FRESH SUMMER PRODUCE

MICHIGAN DARK

Cherries

49¢

Lb.

FRESH

Green Beans

Lb. **29¢**

VINE RIFE KENT

Tomatoes

49¢

Lb.

29¢

HOMEGROWN

Cucumbers

2 for 29¢

Lb.

59¢

SWEET JUICY

Plums



Polly's

MASTER MARKETS

Polly's Little Red Barn
 APPEARING AT POLLY'S ON E. MICH. AVE.
 FRIDAY & SATURDAY FROM 12 A.M.

Featuring
15' HOT DOGS
5' COKE



Polly's MASTER MARKETS

1101 M52 CHELSEA	201 PARK VANDERCOOK LK.	1821 Spring Arbor Rd. JACKSON
960 N. WEST AVE. JACKSON	115 W. PROSPECT ST. JACKSON	1809 E. MICH. AVE. JACKSON

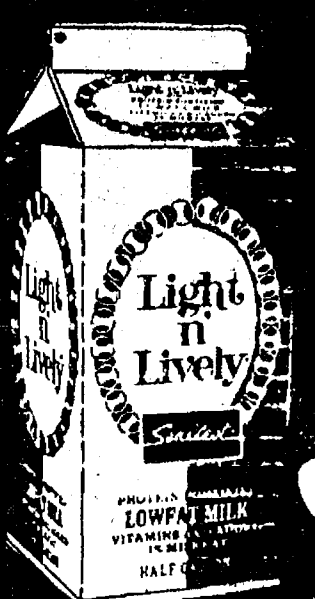
SAVINGS... PLUS QUALITY



SAVE 66¢
 RETURNABLE
8-PAK PEPSI

16-OZ.

99¢



SAVE 51¢

SEALED
LIGHT n' LIVELY
 LOWFAT MILK

2 1/2-gals. 99¢



SAVE 36¢

CHEEZ WHIZ

16-OZ.

99¢

Save 26¢ Queen of Scot
GRAPEFRUIT SECTIONS

3 16-OZ. \$1

Save 20¢... 2' off
AJAX CLEANER

5 14-OZ. \$1

Save 29¢ Creamette
LONG SPAGHETTI
 Save 10¢ Decorative
FIESTA TOWELS

3 14-OZ. \$1

2 Jumbo \$1

Save 32¢ Banquet
POT PIES
 Save 29¢ Holsum
BUTTER TOP BREAD

4 8-OZ. \$1

2 20-OZ. 99¢

Save 10¢ Queen of Scot
FROZEN STRAWBERRIES
 Save 26¢ Borden
ICE CREAM BAR STIX

10-OZ. 39¢

12-PK. 89¢



SAVE 50¢ W/ BONUS COUPON
Gillette RIGHT GUARD 4-OZ. **59¢**
 SAVE 20¢ W/ BONUS COUPONS
Colgate TOOTH PASTE 5-OZ. **63¢**
 Save 90¢ Clairol
HERBAL ESSENCE SHAMPOO 16-OZ. **\$1.59**
 Save 22¢ Rise
SHAVE CREAM 11-OZ. **69¢**
 Save 6¢ Vaseline
PETROLEUM JELLY 4-OZ. **49¢**



save UP TO \$8.88
 WITH POLLY'S COUPON SPECIALS!

IN-STORE COUPONS



SAVE 30¢
 Borden's Elsie

ICE CREAM 1/2 gal.

89¢



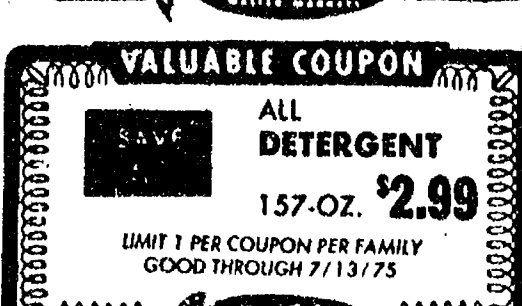
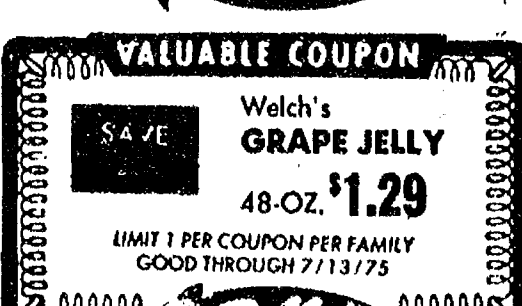
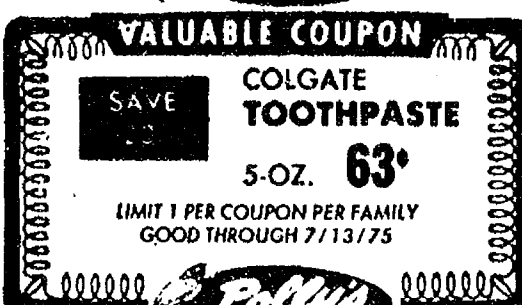
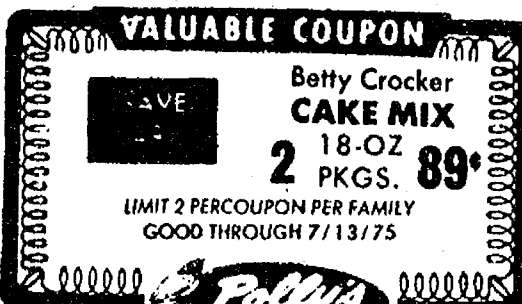
SAVE 16¢ W/ BONUS COUPON
 Pre-Creamed Pure Shortening

SWIFTNING

42-OZ.

\$1.19

BUY 1 SAVE 60¢	Wylers DRINK MIX	24-OZ.	\$1.29
BUY 1 SAVE 10¢	Fleischmans MARGARINE	1-LB.	59¢
BUY 1 SAVE 80¢	Vets NUGGETS & GRAVY	25-LB.	\$3.99
BUY 1 SAVE 20¢	Extra Heavy Duty REYNOLDS WRAP	25-FT.	79¢
BUY 2 SAVE 20¢	10¢ OFF on any variety of ARCHWAY COOKIES		
BUY 1 SAVE 20¢	Maxwell House COFFEE	2-LB.	\$1.89
BUY 1 SAVE 20¢	Queen of Scot PEAS	20-OZ.	49¢
BUY 1 SAVE 20¢	Scot Lad Bite Size POTATOES	4-LB.	79¢
BUY 1 SAVE 50¢	Farmer Peets HOT DOGS	5-LB.	\$4.45
BUY 1 SAVE 20¢	Farmer Peets LUNCH MEAT	1-LB.	\$1.19
BUY 1 SAVE 20¢	Eckrich SMORGAS PAK	1-LB.	\$1.49
BUY 1 SAVE 20¢	Eckrich Beef SMORGAS PAK	12-OZ.	\$1.39
BUY 1 SAVE 51¢	SAV-A-LOT SPECIAL ICE HOT	3 1/2-OZ.	\$2.49
BUY 1 SAVE 5¢	SAV-A-LOT SPECIAL CHOOZ	10-CT.	16¢
BUY 1 SAVE 00¢	SAV-A-LOT SPECIAL VITAMINS	250-CT.	\$2.00



SAVE 49¢ W/ BONUS COUPON
 Betty Crocker
CAKE MIXES

2 18-OZ. 89¢

SAVE 30¢ W/ BONUS COUPON
 Betty Crocker
POTATO BUDS

16-OZ. 69¢

SAVE 60¢ W/ IN-STORE COUPON
 Wylers
DRINK MIXES

24-OZ. \$1.29

SAVE 20¢ W/ IN-STORE COUPON
 Maxwell House
2-POUND COFFEE

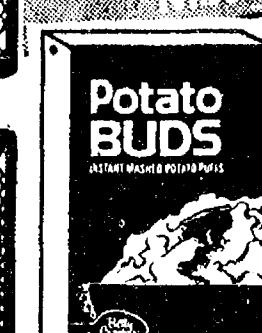
\$1.89

SAVE 30¢ W/ BONUS COUPON
 Welch's
GRAPE JELLY

48-OZ. \$1.29

SAVE 60¢ W/ BONUS COUPON
 Jumbo
ALL DETERGENT

157-OZ. \$2.99



Thank You

FOR SHOPPING AT...



Polly's

MASTER MARKETS

WHERE WE ARE
HAPPY TO.....

save YOU MONEY!